

Dreams come true with us

UNI!ON



LED CONVERTER

Slim Type converter

Waterproof converter

ENCLOSED SWITCHING POWER SUPPLY

Low cost type

General type

OTHERS

DREAMS come TRUE with US

www.unionelec.com.co.kr

We have grown to the provider of the total solution in the field of electric power and electronic parts by developing and manufacturing various reliable SMPS, SSR, Noise Filter using all our employees creativity, passion and ability to rise to challenge.

We have done tremendous efforts for our customers to use SMPS, SSR, Noise Filter with high reliability and high efficiency in the field of indoor and outdoor LED lighting, communication, industrial field, electric sign board, broadcasting, electric system, banking, medical equipment etc.

We will also cope with developing and manufacturing SMPS of customized specification for the satisfaction of various and changing requirements of customers very quickly and production of small quantity with various kinds.

UNION



LED CONVERTER

Slim Type Converter

UP-F Series	30W	4
C.V. mode / 90~264VAC / Slim design		
UP-W2F Series	30~60W	5
C.V. mode / 160~277VAC / Slim design		

Waterproof Converter

UP-W2C Series	100~300W	7
C.V. mode / 160~277VAC / Max. power based on output / Compact Metal Case		
UP-W2SC Series	100~300W	8
C.V. mode / 160~277VAC / Max. power based on input / Compact Metal Case		
UP-W2(V1) Series	10~100W	9
C.V. mode / 160~277VAC / Max. power based on output / Plastic Case		
UP-W2(V1) Series	40~300W	10
C.V. mode / 160~277VAC / Max. power based on output / Metal Case		
UP-W2S Series	100~300W	11
C.V. mode / 160~277VAC / Max. power based on input / Economic Series		
UP-WQ Series	40~150W	12
C.V. mode / 90~277VAC / Wide input		
UP-WH Series	60~120W	13
C.V. mode / 90~305VAC / UL Approved		
UP(F)-MH Series	120~180W	13
C.V. mode / 90~305VAC / UL Approved		
UP-TH Series	60W	14
C.V. mode with threaded terminal/90~305VAC/ Listed UL Approved		
UP-W1 Series	40~150W	15
C.V. mode / 90~132VAC / UL Approved		

Waterproof with PFC Converter

UPF-WQ Series	100~300W	16
C.V. mode with PFC / 90~305VAC		
UPF-WQ2 Series	100~300W	17
C.V. mode with PFC / 160~305VAC		
UPF-CQH Series	30~250W	18
C.V.+C.C. mode with PFC / 90~305VAC		
UPF-CQHD Series	30~250W	19
Dimming function with PFC / 90~305VAC		
UPF-CQ2 Series	60-240W	20
C.C. & C.V mode with PFC / 90~305VAC		
UPF-CQ2D Series	60-240W	21
C.C. & C.V mode / Dimming function with PFC / 90~305VAC		
UPF-C7 Series	30-200W	22
C.C. mode & with PFC / 180~305VAC		
UPF-C7D Series	30-200W	23
C.C. mode & Dimming function with PFC / 180~305VAC		
UPF-EX Series	30-200W	24
Dimming function with PFC / 90~305VAC		
UPF-CP2 Series	50-60W	25
C.C. mode with PFC / 180~264VAC		

ENCLOSED SWITCHING POWER SUPPLY

Low Cost & Slim Type

UP-LHE Series	15~350W	27
---------------	---------	----

General Type

UP Series	15~1500W	28
-----------	----------	----

Quick selection chart

		29
--	--	----

Others

30



LED CONVERTER

SLIM TYPE CONVERTER

UP-F SERIES

UP-W2F SERIES



UP-F series

30W

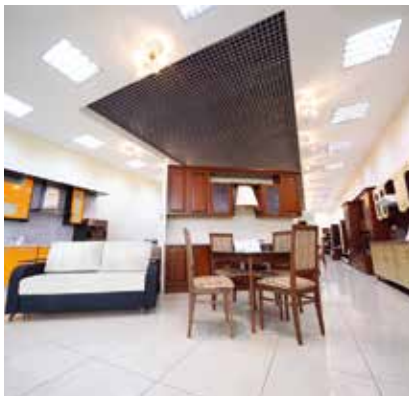
SLIM TYPE CONVERTER

C.V mode
90~264VAC



- **Constant voltage design**
- Wide input voltage range
- Protections : Overload/Over voltage/Short circuit.
- Cooling by free air convection
- **IP62** design for indoor installations
- 100% full load burn-in test
- **Suitable for LED indoor lighting and LED electrical display applications**
- **Plastic case**
- 3years warranty

Slim design



- AC input voltage range : **90-264VAC**
- DC adjustment range : Fixed
- Over load protection : over 110% of rating, auto-recovery
- Over voltage protection : 115-140% rated output voltage
- Withstanding voltage
I-O : 3KVAC, 1minute
- Isolation resistance
I-O : 100 M ohms/500VDC
- Working temperature :
-30~+70°C (refer to output derating curve of homepage)
- Safety standards : EN61347-1, EN61347-2-13 /
K61347-1, K61347-2-13
- EMC standards : K00015, K61547 / EN61000-3-2,3, EN61204-3
EN55022

IP62 SELV LPS CB CE

Model No.	Input Voltage	Output Voltage	Output Current	Efficiency	Max. Power	Size(mm)/Weight
UP30S12F	AC90~264V	12V	2.5A	83%	30W	193.4x28.3x19/0.13kg
UP30S24F	AC90~264V	24V	1.25A	83%	30W	193.4x28.3x19/0.13kg

UP-W2F series

30~60W

SLIM TYPE CONVERTER

**C.V mode
160~277VAC**



- **Constant voltage design**
- Protections : Over load/Over voltage/Short circuit.
- Cooling by free air convection
- **IP62** design for indoor installations
- 100% full load burn-in test
- **Suitable for LED indoor lighting and LED electrical display applications**
- **Plastic case**
- 3years warranty

Slim design



- AC input voltage range : **160~277VAC**
- DC adjustment range : Fixed
- Over load protection : over 110% of rating, auto-recovery
- Over voltage protection : 115-140% rated output voltage
- Withstanding voltage
I-O : 3KVAC, 1minute
- Isolation resistance
I-O : 100 M ohms/500VDC
- Working temperature :
-40~+50°C (refer to output derating curve of homepage)
- Safety standards : EN61347-1, EN61347-2-13 /
K61347-1, K61347-2-13
- EMC standards : K00015, K61547 / EN61000-3-2,3, EN61547
EN55015

IP62 **SELV LPS CB CE**

Model No.	Input Voltage	Output Voltage	Output Current	Efficiency	Max. Power	Size(mm)/Weight
UP30S12W2F	AC160~277V	12V	2.5A(1.87A@50°C)	83%	30W	193.4x28.3x19/0.13kg
UP60S12W2F	AC160~277V	12V	5A(3.75A@50°C)	86%	60W	202x29.8x23.2/0.18kg
UP60S24W2F	AC160~277V	24V	2.5A(1.87A@50°C)	87%	60W	202x29.8x23.2/0.18kg



LED CONVERTER

WATERPROOF CONVERTER

UP-W2C SERIES / UP-W2SC SERIES
UP-W2(V1) SERIES / UP-W2S SERIES
UP-WQ SERIES / UP-WH SERIES
UP(F)-MH SERIES / UP-TH SERIES
UP-W1 SERIES / UPF-WQ SERIES
UPF-WQ2 SERIES / UPF-CQH[D] SERIES
UPF-CQ2[D] SERIES / UPF-C7[D] SERIES
UPF-EX SERIES / UPF-CP2 SERIES



UP-W2C series 100~300W

Waterproof
IP68

C.V. mode
160~277VAC



- **Constant voltage design**
- Protections : Over load / Over voltage / Short circuit / Over temperature
- Cooling by free air convection
- **IP68** design for outdoor installations
- 100% full load burn-in test
- **Suitable for LED lighting and moving sign applications**
- **Small metal case**
- 5years warranty



Compact Metal Case



- AC input voltage range : **160~277VAC**
- DC adjustment range : Fixed, can be modified within $\pm 5\%$ rated output voltage (but, do not use over the rated Power)
- Over load protection : over 110% of rating, auto-recovery
- Over voltage protection : 115-140% rated output voltage
- Withstanding voltage
I-O : 3KVAC, I-FG : 1.5KVAC, O-FG : 0.5KVAC, 1minute
- Isolation resistance
I-O, I-FG, O-FG : 100 M ohms/500VDC
- Working temperature : $-40\sim+70^{\circ}\text{C}$ (refer to output derating curve of homepage)
- Safety standards : EN61347-1,EN61347-2-13
- EMC standards : EN55022,EN61204-3,EN61000-3-2,3

IP68 **SELV LPS CB CE**

Model No.	Input Voltage	Output Voltage	Output Current	Efficiency	Max. Power	Size(mm)/Weight	OTP
UP100S12W2C	AC160~277V	12V	8.3A (8.3A@50°C)	85%	100W	203x48.1x36.8/0.60kg	Built-in
UP100S24W2C	AC160~277V	24V	4.2A (4.2A@50°C)	87%	100W	203x48.1x36.8/0.60kg	Built-in
UP150S12W2C	AC160~277V	12V	12.5A (11A@50°C)	86%	150W	218x55.5x37.3/0.68kg	Built-in
UP150S24W2C	AC160~277V	24V	6.3A (5.5A@50°C)	87%	150W	218x55.5x37.3/0.68kg	Built-in
UP200S12W2C	AC160~277V	12V	16.6A (16.6A@50°C)	88%	200W	233x61.5x37.1/0.93kg	Built-in
UP200S24W2C	AC160~277V	24V	8.3A (8.3A@50°C)	89%	200W	233x61.5x37.1/0.93kg	Built-in
UP300S12W2C	AC160~277V	12V	25A (20.7A@50°C)	88%	300W	278x61.5x37.1/1.08kg	Built-in
UP300S24W2C	AC160~277V	24V	12.5A (10.4A@50°C)	89%	300W	278x61.5x37.1/1.08kg	Built-in

UP-W2SC series 100~300W



C.V. mode
160~277VAC



- **Constant voltage design**
- Protections : Over load/Over voltage/Short circuit
- Cooling by free air convection
- **IP68** design for outdoor installations
- 100% full load burn-in test
- **Suitable for LED lighting and moving sign applications**
- **Compact metal case**
- 3years warranty



Compact Metal Case

- AC input voltage range : **160~277VAC**
- DC adjustment range : Fixed, can be modified within $\pm 5\%$ rated output voltage (but, do not use over the rated Power)
- Over load protection : over 110% of rating, auto-recovery
- Over voltage protection : 115-140% rated output voltage
- Withstanding voltage
I-O : 3KVAC, I-FG : 1.5KVAC, O-FG : 0.5KVAC, 1minute
- Isolation resistance
I-O, I-FG, O-FG : 100 M ohms/500VDC
- Working temperature : -40~+70°C
(refer to output derating curve of homepage)
- Safety standards : EN61347-1, EN61347-2-13/K61347-1, K61347-2-13
- EMC standards : EN55022, EN61204-3, EN61000-3-2,3/K00015, K61547

IP68 SELV LPS CE

Model No.	Input Voltage	Output Voltage	Output Current	Efficiency	Max. Power	Size(mm)/Weight
UP100S12W2SC	AC160~277V	12V	7.1A (7.1A@50°C)	85%	85W	193x48.1x36.8/0.55kg
UP100S24W2SC	AC160~277V	24V	3.6A (3.6A@50°C)	87%	85W	193x48.1x36.8/0.55kg
UP150S12W2SC	AC160~277V	12V	10.8A (9.4A@50°C)	86%	130W	208x55.5x37.3/0.64kg
UP150S24W2SC	AC160~277V	24V	5.4A (4.7A@50°C)	86%	130W	208x55.5x37.3/0.64kg
UP200S12W2SC	AC160~277V	12V	15A (12.5A@50°C)	88%	180W	220x61.5x37.1/0.82kg
UP200S24W2SC	AC160~277V	24V	7.5A (6.3A@50°C)	89%	180W	220x61.5x37.1/0.82kg
UP300S12W2SC	AC160~277V	12V	20A (18.8A@50°C)	88%	240W	260x61.5x37.1/0.98kg
UP300S24W2SC	AC160~277V	24V	10.5A (9.5A@50°C)	89%	252W	260x61.5x37.1/0.98kg

UP-W2(V1) series 10~100W



C.V. mode
160~277VAC



- **Constant voltage design**
- Protections : Over load / Over voltage / Short circuit
- Cooling by free air convection
- **IP68** design for outdoor installations
- 100% full load burn-in test
- **Suitable for LED lighting and moving sign applications**
- **Plastic case**
- 3years warranty



Plastic Case



- AC input voltage range : **160~277VAC**
- DC adjustment range : Fixed, can be modified within $\pm 5\%$ rated output voltage (but, do not use over the rated Power)
- Over load protection : over 110% of rating, auto-recovery
- Over voltage protection : 115-140% rated output voltage
- Withstanding voltage
I-O : 3KVAC, I-FG : 1.5KVAC, O-FG : 0.5KVAC, 1minute
- Isolation resistance
I-O, I-FG, O-FG : 100 M ohms/500VDC
- Working temperature : $-40\sim+70^{\circ}\text{C}$ (refer to output derating curve of homepage)
- Safety standards : EN61347-1,EN61347-2-13/K61347-1,K61347-2-13
- EMC standards : EN55022,EN61204-3,EN61000-3-2,3 / K00015,K61547

Plastic Case

IP68 SELV LPS C B CE

Model No.	Input Voltage	Output Voltage	Output Current	Efficiency	Max. Power	Size(mm)/Weight
UP10S12W2(V1)	AC160~277V	12V	0.83A	81%	10W	126.5x35.5x23.5/0.08kg
UP10S24W2(V1)	AC160~277V	24V	0.41A	81%	10W	126.5x35.5x23.5/0.08kg
UP20S12W2(V1)	AC160~277V	12V	1.66A	82%	20W	151.5x35.5x25.5/0.12kg
UP20S24W2(V1)	AC160~277V	24V	0.83A	82%	20W	151.5x35.5x25.5/0.12kg
UP30S12W2(V1)	AC160~277V	12V	2.5A	83%	30W	151.5x35.5x25.5/0.14kg
UP30S24W2(V1)	AC160~277V	24V	1.25A	84%	30W	151.5x35.5x25.5/0.14kg
UP40S12W2(V1)	AC160~277V	12V	3.33A	83%	40W	146.5x42 x38/0.3kg
UP40S24W2(V1)	AC160~277V	24V	1.66A	85%	40W	146.5x42 x38/0.3kg
UP60S12W2(V1)	AC160~277V	12V	5A	83%	60W	170.5x42 x38/0.35kg
UP60S24W2(V1)	AC160~277V	24V	2.5A	85%	60W	170.5x42 x38/0.35kg
UP100S12W2(V1)P	AC160~277V	12V	8.33A	85%	100W	200x51.5x40/0.54kg

UP-W2(V1) series 40~300W



C.V. mode 160~277VAC CE
Metal Case

- **Constant voltage design**
- Protections : Over load / Over voltage / Short circuit / Over temperature
- Cooling by free air convection
- **IP68** design for outdoor installations
- 100% full load burn-in test
- **Suitable for LED lighting and moving sign applications**
- **Metal case**
- 3years warranty



Metal Case



- AC input voltage range : **160~277VAC**
- DC adjustment range : Fixed, can be modified within $\pm 5\%$ rated output voltage (but, do not use over the rated Power)
- Over load protection : over 110% of rating, auto-recovery
- Over voltage protection : 115-140% rated output voltage
- Withstanding voltage
I-O : 3KVAC, I-FG : 1.5KVAC, O-FG : 0.5KVAC, 1minute
- Isolation resistance
I-O, I-FG, O-FG : 100 M ohms/500VDC
- Working temperature : $-40\sim+70^{\circ}\text{C}$ (refer to output derating curve of homepage)
- Safety standards : EN61347-1, EN61347-2-13/K61347-1, K61347-2-13
- EMC standards : EN55022, EN61204-3, EN61000-3-2,3/K00015, K61547

Metal Case

IP68 SELV LPS C B CE

Model No.	Input Voltage	Output Voltage	Output Current	Efficiency	Max. Power	Size(mm)/Weight	OTP
UP40S12W2(V1)M	AC160~277V	12V	3.33A	84%	40W	171x48.1x37.6/0.4kg	Built-in
UP40S24W2(V1)M	AC160~277V	24V	1.66A	86%	40W	171x48.1x37.6/0.4kg	Built-in
UP60S12W2(V1)M	AC160~277V	12V	5A	84%	60W	171x48.1x37.6/0.4kg	Built-in
UP60S24W2(V1)M	AC160~277V	24V	2.5A	86%	60W	171x48.1x37.6/0.4kg	Built-in
UP80S12W2(V1)	AC160~277V	12V	6.66A	85%	80W	196x48.1x37.6/0.45kg	Built-in
UP100S12W2(V1)	AC160~277V	12V	8.33A	85%	100W	210x56.7x42.3/0.7kg	Built-in
UP100S24W2(V1)	AC160~277V	24V	4.16A	88%	100W	210x56.7x42.3/0.7kg	Built-in
UP150S12W2(V1)	AC160~277V	12V	12.5A	85%	150W	212x74x46.5/0.9kg	Built-in
UP150S24W2(V1)	AC160~277V	24V	6.25A	88%	150W	212x74x46.5/0.9kg	Built-in
UP200S12W2(V1)	AC160~277V	12V	16.6A(12.49A@50°C)	85%	200W	233x74x46.5/1.1kg	Built-in
UP200S24W2(V1)	AC160~277V	24V	8.33A(6.24A@50°C)	88%	200W	233x74x46.5/1.1kg	Built-in
UP300S12W2(V1)	AC160~277V	12V	25A(18.75A@50°C)	85%	300W	282x74x51/1.45kg	Built-in
UP300S24W2(V1)	AC160~277V	24V	12.5A(9.37A@50°C)	88%	300W	282x74x51/1.45kg	Built-in



C.V. mode
160~277VAC



- **Constant voltage design**
- Protections : Over load/Over voltage/Short circuit/Over temperature
- Cooling by free air convection
- **IP68** design for outdoor installations
- 100% full load burn-in test
- **Suitable for LED lighting and moving sign applications**
- **Small metal case**
- 2years warranty



Small Metal Case

- AC input voltage range : **160~277VAC**
- DC adjustment range : Fixed, can be modified within $\pm 5\%$ rated output voltage (but, do not use over the rated Power)
- Over load protection : over 110% of rating, auto-recovery
- Over voltage protection : 115-140% rated output voltage
- Withstanding voltage
I-O : 3KVAC, I-FG : 1.5KVAC, O-FG : 0.5KVAC, 1minute
- Isolation resistance
I-O, I-FG, O-FG : 100 M ohms/500VDC
- Working temperature : $-40\sim+70^{\circ}\text{C}$
(refer to output derating curve of homepage)
- Safety standards : EN61347-1, EN61347-2-13/K61347-1, K61347-2-13
- EMC standards : EN55022, EN61204-3, EN61000-3-2, 3/K00015, K61547

IP68 SELV LPS CE

Model No.	Input Voltage	Output Voltage	Output Current	Efficiency	Max. Power	Size(mm)/Weight	OTP
UP100S12W2S	AC160~277V	12V	7.1A	85%	85W	196x48.1x37.6/0.45kg	Built-in
UP150S12W2S	AC160~277V	12V	10.8A	85%	130W	215x56.7x42.3/0.72kg	Built-in
UP200S12W2S	AC160~277V	12V	13.3A (12.5A@50°C)	86%	160W	212x74x46.5/0.9kg	Built-in
UP300S12W2S	AC160~277V	12V	20A (18.8A@50°C)	87%	240W	251x74x46.5/1.2kg	Built-in

UP-WQ series 8~150W



C.V. mode
90~277VAC



- **Constant voltage design**
- Wide input voltage range
- Protections: Over load / Over voltage / Short circuit / Over temperature
- **IP68** design for outdoor installations (8W : **IP42**)
- 100% full load burn-in test
- **Suitable for LED lighting and moving sign applications**
- **Plastic case : 8~60W**
- **Metal case : 100~150W**
- 3years warranty



- AC input voltage range : **90-277VAC**
- DC adjustment range : Fixed, can be modified within $\pm 10\%$ rated output voltage. (but, do not use over the rated Power)
- Over load protection : over 110% of rating, auto-recovery
- Over voltage protection : 115-140% rated output voltage
- Withstanding voltage : I-O : 3KVAC, I-FG : 1.5KVAC, O-FG : 0.5KVAC, 1minute
- Isolation resistance
I-O, I-FG, O-FG : 100 M ohms/500VDC
- Working temperature : -40~+70°C (refer to output derating curve of homepage)
- Safety standards : EN61347-1, EN61347-2-13
- EMC standards : EN55022, EN61204-3, EN61000-3-2,3

Plastic Case

IP68 SELV LPS CE

Model No.	Input Voltage	Output Voltage	Output Current	Efficiency	Max. Power	Size(mm)/Weight
UP8S12WQ	AC90~277V	12V	0.67A	80%	8W	86.2x29.8x25.5/46g
UP8S24WQ	AC90~277V	24V	0.33A	81%	8W	86.2x29.8x25.5/46g
UP12S12WQ	AC90~277V	12V	1A	80%	12W	126.5x35.5x23.5/82g
UP12S24WQ	AC90~277V	24V	0.5A	80%	12W	126.5x35.5x23.5/82g
UP16S12WQ	AC90~277V	12V	1.34A	80%	16W	126.5x35.5x23.5/115g
UP16S24WQ	AC90~277V	24V	0.67A	80%	16W	126.5x35.5x23.5/115g
UP20S12WQ	AC90~277V	12V	1.67A	81%	20W	151.5x35.5x25.5/150g
UP20S24WQ	AC90~277V	24V	0.84A	81%	20W	151.5x35.5x25.5/150g
UP25S12WQ	AC90~277V	12V	2.08A	82%	25W	151.5x35.5x25.5/153g
UP25S24WQ	AC90~277V	24V	1.04A	82%	25W	151.5x35.5x25.5/153g
UP35S12WQ	AC90~277V	12V	2.9A	84%	35W	146.5x42x38/256g
UP35S24WQ	AC90~277V	24V	1.46A	85%	35W	146.5x42x38/256g
UP40S12WQ	AC90~277V	12V	3.33A	84%	40W	146.5x42x38/300g
UP40S24WQ	AC90~277V	24V	1.66A	85%	40W	146.5x42x38/300g
UP60S12WQ	AC90~277V	12V	5A	84%	60W	170.5x42x38/350g
UP60S24WQ	AC90~277V	24V	2.5A	85%	60W	170.5x42x38/350g

Metal Case

Model No.	Input Voltage	Output Voltage	Output Current	Efficiency	Max. Power	Size(mm)/Weight	OTP
UP100S12WQ	AC90~277V	12V	8.33A	84%	100W	215x56.7x42.3/720g	Built-in
UP100S24WQ	AC90~277V	24V	4.16A	87%	100W	215x56.7x42.3/720g	Built-in
UP150S12WQ	AC90~277V	12V	12.5A	84%	150W	261x56.7x42.3/1kg	Built-in
UP150S24WQ	AC90~277V	24V	6.25A	87%	150W	261x56.7x42.3/1kg	Built-in

UP-WH series UP(F)-MH series

60~120W
120~180W



C.V. mode 90~305VAC
Class 2 Power unit



- **Constant voltage design**
- Protections : Over load/Over voltage/Short circuit/Over temperature
- Cooling by free air convection
- **IP68** design for outdoor installations
- **Class 2 Power unit** (60W only)
- 100% full load burn-in test
- **Dry, damp locations**
- **Suitable for LED lighting and moving sign applications**
- **Metal case**
- 5 years warranty

- AC input voltage range : **90~305VAC**
- DC adjustment range : Fixed, can be modified within $\pm 5\%$ rated output voltage. (but, do not use over the rated Power)
- Over load protection : over 110% of rating, auto-recovery
- Over voltage protection : 115-140% rated output voltage
- Withstanding voltage : I-O : 3.75KVAC, I-FG : 2KVAC, O-FG : 1.5KVAC, 1minute
- Isolation resistance : I-O, I-FG, O-FG : 100 M ohms/500VDC
- Working temperature : $-40\sim+70^{\circ}\text{C}$ (refer to output derating curve of homepage)
- Safety standards : UL879
- EMC standards : FCC Part 15 class B



✓ **60W : Class2 outputs**

IP68 SELV LPS FC

Model No.	Input Voltage	Output Voltage	Output Current	Efficiency	Max. Power	Size(mm)/Weight	OTP
UP60S12WH	AC90~305V	12V	Class 2 5A	84%	60W	194x56.7x42.3/0.75kg	Built-in
UP100S12WH	AC90~305V	12V	8.3A	84%	100W	237x56.7x42.3/ 0.92kg	Built-in
UP120S12WH	AC90~305V	12V	10A	84%	120W	253x56.7x42.3/ 1kg	Built-in



✓ **120W : two 60W Class2 outputs**
180W : three 60W Class2 outputs(Built-in PFC function)

IP68 SELV LPS FC

Model No.	Input Voltage	Output Voltage	Output Current	Efficiency	Max. Power	Size(mm)/Weight	OTP
UP120S12MH	AC90~305V	12V	5A*2 Class 2 (Dual Output)	85%	120W	211x68x38.8/ 0.9kg	Built-in
UPF180S12MH	AC90~305V	12V	5A*3 Class 2 (Triple Output)	89%	180W	263x72x40.8/ 1.4kg	Built-in



C.V. mode with threaded terminal 90~305VAC Class 2 Power unit

- **Constant voltage design**
- Protections : Over load/Over voltage/Short circuit/Over temperature
- Cooling by free air convection
- IP68 design for outdoor installations
- **Class 2 Power unit**
- 100% full load burn-in test
- Dry, damp and wet locations
- 1/2" NPT threaded connector to simplify electrical wiring
- Suitable for LED lighting and moving sign applications
- Metal case
- 5 years warranty

LISTED UL Approved Class2 outputs



- AC input voltage range : **90~305VAC**
- DC adjustment range : Fixed, can be modified within $\pm 5\%$ rated output voltage. (but, do not use over the rated Power)
- Over load protection : over 110% of rating, auto-recovery
- Over voltage protection : 115-140% rated output voltage
- Withstanding voltage : I-O : 3.75KVAC, I-FG : 2KVAC, O-FG : 1.5KVAC, 1minute
- Isolation resistance : I-O, I-FG, O-FG : 100 M ohms/500VDC
- Working temperature : $-40\sim+70^{\circ}\text{C}$ (refer to output derating curve of homepage)
- Safety standards : UL879
- EMC standards : FCC Part 15 class B

IP68 SELV LPS

Model No.	Input Voltage	Output Voltage	Output Current	Efficiency	Max. Power	Size(mm)/Weight	OTP
UP60S12TH	AC90~305V	12V	Class 2 5A	84%	60W	197x56.7x42.3/0.75kg	Built-in

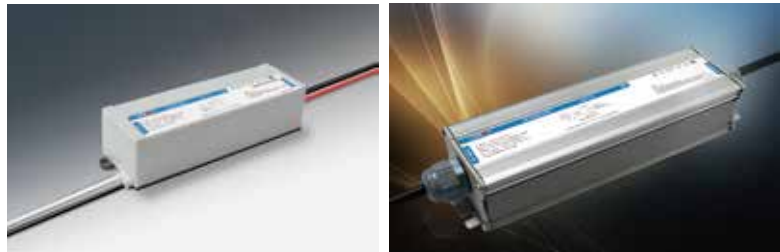


C.V. mode 90~132VAC
Class 2 Power unit



- **Constant voltage design**
- Protections : Overload/Over voltage/Short circuit/Over temperature
- Cooling by free air convection
- IP68 design for outdoor installations
- **Class 2 power unit(for 40~60W only)**
- 100% full load burn-in test
- **Dry, damp locations**
- Suitable for LED lighting and moving sign applications
- Plastic case : 40~60W
- Metal case : 100~150W
- 3years warranty

✓ 40~60W : Class2 outputs



- AC input voltage range : **90~132VAC**
- DC adjustment range : Fixed, can be modified within $\pm 5\%$ rated output voltage.(but, do not use over the rated Power)
- Over load protection : over 110% of rating, auto-recovery
- Over voltage protection : 115-140% rated output voltage
- Withstanding voltage
I-O : 3KVAC, I-FG : 1.5KVAC, O-FG : 0.5KVAC, 1minute
- Isolation resistance
I-O, I-FG, O-FG : 100 M ohms/500VDC
- Working temperature : -40~+50°C (refer to output derating curve of homepage)
- Safety standards: UL879

IP68 SELV LPS

Model No.	Input Voltage	Output Voltage	Output Current	Efficiency	Max. Power	Size(mm)/Weight	OTP
UP40S12W1	AC90~132V	12V	Class 2 3.3A(2.49A@50°C)	82%	40W	146.5x42 x38/0.3kg	Built-in
UP60S12W1	AC90~132V	12V	Class 2 5A(3.75A@50°C)	82%	60W	170.5x42 x38/0.35kg	Built-in
UP100S12W1	AC90~132V	12V	8.4A(6.24A@50°C)	82%	100W	206x56.7x42.3/0.7kg	Built-in
UP150S12W1	AC90~132V	12V	12.5A(9.37A@50°C)	84%	150W	208x74x46.5/0.95kg	Built-in



C.V. mode with PFC
90~305VAC



- **Constant voltage design**
- Built-in **PFC** function
- Wide input voltage range
- Protections: Over load / Over voltage / Short circuit / Over temperature
- **IP68** design for outdoor installations
- 100% full load burn-in test
- **Suitable for LED lighting and moving sign applications**
- **Metal case**
- 3years warranty



- AC input voltage range : **90-305VAC**
- Power Factor : 0.95 min. (Condition : 60%~100% rated Power)
- DC adjustment range : Fixed, can be modified within $\pm 10\%$ rated output voltage. (but, do not use over the rated Power)
- Over load protection : over 100% of rating, auto-recovery
- Over voltage protection : 115-140% rated output voltage
- Withstanding voltage : I-O:3.75KVAC, I-FG:2KVAC, O-FG:1.5KVAC, 1minute
- Isolation resistance
I-O, I-FG, O-FG : 100 M ohms/500VDC
- Working temperature : -40~+70°C (refer to output derating curve of homepage)
- Safety standards : EN61347-1, EN61347-2-13, K61347-1, K61347-2-13
- EMC standards : EN55015, EN61000-3-2,3, EN61547/K00015, K61547

P68

Model No.	Input Voltage	Output Voltage	Output Current	Efficiency	Max. Power	Size(mm)/Weight	OTP
UPF100S12WQ	AC90~305V	12V	8.33A	86%	100W	198.6x61.5x36.8/0.76kg	Built-in
UPF100S24WQ	AC90~305V	24V	4.15A	87%	100W	198.6x61.5x36.8/0.76kg	Built-in
UPF150S12WQ	AC90~305V	12V	12.5A	89%	150W	223x68x38.8/1.04kg	Built-in
UPF150S24WQ	AC90~305V	24V	6.25A	90%	150W	223x68x38.8/1.04kg	Built-in
UPF200S12WQ	AC90~305V	12V	16.6A(12.49A@50°C)	89%	200W	231x68x38.8/1.05kg	Built-in
UPF200S24WQ	AC90~305V	24V	8.4A(6.3A@50°C)	90%	200W	231x68x38.8/1.05kg	Built-in
UPF300S12WQ	AC90~305V	12V	22A(18.75A@50°C) at 115VAC 25A(18.75A@50°C) at 230VAC	90%	300W	263x72x40.8/1.4kg	Built-in
UPF300S24WQ	AC90~305V	24V	11A(9.4A@50°C) at 115VAC 12.5A(9.4A@50°C) at 230VAC	92%	300W	263x72x40.8/1.4kg	Built-in



C.V. mode with PFC
160~305VAC

- **Constant voltage design**
- Built-in **PFC** function
- Protection : Over current/Over voltage/ Short circuit
- **IP68** design for outdoor installations
- 100% full load burn-in test
- **Suitable for LED lighting and street lighting applications**
- **Metal case**
- 3years warranty



- AC input voltage range : **160-305VAC**
- Power Factor : 0.95 min. (Condition : 60%~100% rated Power)
- DC adjustment range : Fixed, can be modified within $\pm 10\%$ rated output voltage. (but, do not use over the rated Power)
- Over load protection : over 100% of rating, auto-recovery
- Over voltage protection : 115-140% rated output voltage
- Withstanding voltage : I-O:3.75KVAC, I-FG:2KVAC, O-FG:1.5KVAC, 1minute
- Isolation resistance
I-O, I-FG, O-FG : 100 M ohms/500VDC
- Working temperature : -40~+70°C (refer to output derating curve of homepage)
- Safety standards : K61347-1, K61347-2-13
- EMC standards : K61547, K00015

IP68 SELV LPS

Model No.	Input Voltage	Output Voltage	Output Current	Efficiency	Max. Power	Size(mm)/Weight
UPF80S12WQ2	AC160~305V	12V	6.66A	85%	80W	184x61.5x37.1/0.64kg
UPF100S12WQ2	AC160~305V	12V	7.1A	85%	86W	184x61.5x37.1/0.64kg
UPF150S12WQ2	AC160~305V	12V	11A	86%	132W	202x61.5x37.1/0.71kg
UPF200S12WQ2	AC160~305V	12V	15A	88%	180W	222x61.5x37.1/0.77kg
UPF250S12WQ2	AC160~305V	12V	18.5A(16A@50°C)	89%	222W	241x68x38.8/1.07kg
UPF300S12WQ2	AC160~305V	12V	22A(18.75A@50°C)	89%	264W	263x68x38.8/1.15kg



C.V & C.C mode with PFC
90~305VAC



- Constant voltage or constant current design(C.V+C.C mode) (30W,200W : C.C mode only & 12V : C.V mode only)
- Built-in PFC function ● Wide input voltage range
- Protections : Over current / Over voltage / Short circuit / Over temperature
- IP68 design for outdoor installations
- Output voltage and current level can be adjusted through internal potentiometer(except for 12V)
- 100% full load burn-in test
- Suitable for LED lighting and street lighting applications
- Metal case(UPF30S36CQHP : Plastic case)
- 5years warranty



- AC input voltage range : 90~305VAC(30W:180~264VAC/200W:180~305VAC)
- Power Factor : 0.95min(Condition:60%~100% rated Power)
- Output voltage and current level can be adjusted through internal potentiometer
 - Voltage adj. range : ±10% rated output voltage(but,do not use over the rated power)
 - Current adj. range : 60~100% rated output current(except for 12V)
- Over current protection : 95~108%(refer to "DRIVING METHODS of LED MODULE")
- Over voltage protection : 115~140% rated output voltage
- Withstanding voltage
 - I-O:3.75KVAC,I-FG:2KVAC,O-FG:1.5KVAC,1minute
- Isolation resistance : I-O,I-FG,O-FG : 100M ohms/500VDC
- Working temperature : -40~+70°C(refer to output derating curve of homepage)
- Safety standards : EN61347-1,EN61347-2-13/J61347-1,J61347-2-13/K61347-1,K61347-2-13
- EMC standards : EN55015,EN61000-3-2,3,EN61547/J55015/K00015,K61547

IP68 SELV LPS

Model No.	Input Voltage	Output Voltage	C.C region	Output Current	Efficiency	Max. Power	Size(mm)/Weight	OTP
UPF30S36CQHP	AC180~264V	36V	28V~36V	0.7A	85%	30W	146.5x42x38/0.3kg	—
UPF30S36CQH	AC180~264V	36V	26V~36V	0.8A	85%	30W	174x61.5x36.8/0.66kg	—
UPF30S48CQH	AC180~264V	48V	36V~48V	0.65A	86%	30W	174x61.5x36.8/0.66kg	—
UPF40S12CQH	AC90~305V	12V	C.V mode	3.33A	84%	40W	174x61.5x36.8/0.66kg	Built-in
UPF40S24CQH	AC90~305V	24V	14.4V~24V	1.67A	85%	40W	174x61.5x36.8/0.66kg	Built-in
UPF40S36CQH	AC90~305V	36V	21.6V~36V	1.12A	85%	40W	174x61.5x36.8/0.66kg	Built-in
UPF40S48CQH	AC90~305V	48V	28.8V~48V	0.84A	87%	40W	174x61.5x36.8/0.66kg	Built-in
UPF60S12CQH	AC90~305V	12V	C.V mode	5A	84%	60W	174x61.5x36.8/0.66kg	Built-in
UPF60S24CQH	AC90~305V	24V	14.4V~24V	2.5A	86%	60W	174x61.5x36.8/0.66kg	Built-in
UPF60S36CQH	AC90~305V	36V	21.6V~36V	1.7A	86%	60W	174x61.5x36.8/0.66kg	Built-in
UPF60S48CQH	AC90~305V	48V	28.8V~48V	1.25A	88%	60W	174x61.5x36.8/0.66kg	Built-in
UPF80S12CQH	AC90~305V	12V	C.V mode	6.66A	85%	80W	198.6x61.5x36.8/0.76kg	Built-in
UPF80S24CQH	AC90~305V	24V	14.5V~24V	3.4A	87%	80W	198.6x61.5x36.8/0.76kg	Built-in
UPF80S36CQH	AC90~305V	36V	21.6V~36V	2.3A	88%	80W	198.6x61.5x36.8/0.76kg	Built-in
UPF80S48CQH	AC90~305V	48V	28.8V~48V	1.7A	89%	80W	198.6x61.5x36.8/0.76kg	Built-in
UPF100S12CQH	AC90~305V	12V	C.V mode	8.33A	88%	100W	223x68x38.8/1.04kg	Built-in
UPF100S24CQH	AC90~305V	24V	12V~24V	4.2A	90%	100W	223x68x38.8/1.04kg	Built-in
UPF100S36CQH	AC90~305V	36V	22V~36V	2.8A	90%	100W	223x68x38.8/1.04kg	Built-in
UPF100S48CQH	AC90~305V	48V	24V~48V	2.1A	91%	100W	223x68x38.8/1.04kg	Built-in
UPF150S12CQH	AC90~305V	12V	C.V mode	12.5A	89%	150W	231x68x38.8/1.05kg	Built-in
UPF150S24CQH	AC90~305V	24V	12V~24V	6.3A	90%	150W	231x68x38.8/1.05kg	Built-in
UPF150S36CQH	AC90~305V	36V	18V~36V	4.2A	91%	150W	231x68x38.8/1.05kg	Built-in
UPF150S48CQH	AC90~305V	48V	24V~48V	3.2A	91%	150W	231x68x38.8/1.05kg	Built-in
UPF200S36CQH	AC180~305V	36V	18V~36V	5.6A	92%	200W	241x68x38.8/1.07kg	Built-in
UPF200S48CQH	AC180~305V	48V	24V~48V	4.2A	92%	200W	241x68x38.8/1.07kg	Built-in
UPF250S12CQH	AC90~305V	12V	C.V mode	18.75A	90%	225W	263x72x40.8/1.4kg	Built-in
UPF250S24CQH	AC90~305V	24V	12V~24V	10.5A	91%	250W	263x72x40.8/1.4kg	Built-in
UPF250S36CQH	AC90~305V	36V	18V~36V	7A	92%	250W	263x72x40.8/1.4kg	Built-in
UPF250S48CQH	AC90~305V	48V	24V~48V	5.2A	92%	250W	263x72x40.8/1.4kg	Built-in

Note. * Cable for I/O connection.
* Output voltage and current level can be adjusted through internal potentiometer



C.C mode 90~305VAC
Dimming function with PFC

- Constant current design(C.C mode)
- Built-in PFC function
- Wide input voltage range
- Protections : Over current / Over voltage / Short circuit / Over temperature
- IP68 design for outdoor installations
- Output voltage and current level can be adjusted through internal potentiometer
- 3 in 1 dimming function
- 100% full load burn-in test
- Suitable for LED lighting and street lighting applications
- Metal case(UPF30S36CQHP : Plastic case)
- 5years warranty



- AC input voltage range : 90~305VAC(30W:180~264VAC/200W:180~305VAC)
- Power Factor : 0.95min(Condition:60%~100% rated Power)
- Output voltage and current level can be adjusted through internal potentiometer
 - Voltage adj. range : ±10% rated output voltage(but,do not use over the rated power)
 - Current adj. range : 60~100% rated output current(except for 12V)
- Over current protection : 95~108%(refer to "DRIVING METHODS of LED MODULE")
- Over voltage protection : 115~140% rated output voltage
- Withstanding voltage
 - I-O:3.75KVAC,I-FG:2KVAC,O-FG:1.5KVAC,1minute
- Isolation resistance : I-O,I-FG,O-FG : 100M ohms/500VDC
- Working temperature : -40~+70°C(refer to output derating curve of homepage)
- Safety standards : EN61347-1,EN61347-2-13/J61347-1,J61347-2-13/K61347-1,K61347-2-13
- EMC standards : EN55015,EN61000-3-2,3,EN61547/J55015/K00015,K61547

IP68 SELV LPS CB CE

Model No.	Input Voltage	Output Voltage	C.C region	Output Current	Efficiency	Max. Power	Size(mm)/Weight	OTP
UPF30S36CQHPD	AC180~264V	36V	28V~36V	0.7A	85%	30W	146,5x42x38/0.3kg	—
UPF30S36CQHD	AC180~264V	36V	26V~36V	0.8A	85%	30W	174x61.5x36.8/0.66kg	—
UPF30S48CQHD	AC180~264V	48V	36V~48V	0.65A	86%	30W	174x61.5x36.8/0.66kg	—
UPF40S24CQHD	AC90~305V	24V	14.4V~24V	1.67A	85%	40W	174x61.5x36.8/0.66kg	Built-in
UPF40S36CQHD	AC90~305V	36V	21.6V~36V	1.12A	85%	40W	174x61.5x36.8/0.66kg	Built-in
UPF40S48CQHD	AC90~305V	48V	28.8V~48V	0.84A	87%	40W	174x61.5x36.8/0.66kg	Built-in
UPF60S24CQHD	AC90~305V	24V	14.4V~24V	2.5A	86%	60W	174x61.5x36.8/0.66kg	Built-in
UPF60S36CQHD	AC90~305V	36V	21.6V~36V	1.7A	86%	60W	174x61.5x36.8/0.66kg	Built-in
UPF60S48CQHD	AC90~305V	48V	28.8V~48V	1.25A	88%	60W	174x61.5x36.8/0.66kg	Built-in
UPF80S24CQHD	AC90~305V	24V	14.5V~24V	3.4A	87%	80W	198.6x61.5x36.8/0.76kg	Built-in
UPF80S36CQHD	AC90~305V	36V	21.6V~36V	2.3A	88%	80W	198.6x61.5x36.8/0.76kg	Built-in
UPF80S48CQHD	AC90~305V	48V	28.8V~48V	1.7A	89%	80W	198.6x61.5x36.8/0.76kg	Built-in
UPF100S24CQHD	AC90~305V	24V	12V~24V	4.2A	90%	100W	223x68x38.8/1.04kg	Built-in
UPF100S36CQHD	AC90~305V	36V	22V~36V	2.8A	90%	100W	223x68x38.8/1.04kg	Built-in
UPF100S48CQHD	AC90~305V	48V	24V~48V	2.1A	91%	100W	223x68x38.8/1.04kg	Built-in
UPF150S24CQHD	AC90~305V	24V	12V~24V	6.3A	90%	150W	231x68x38.8/1.05kg	Built-in
UPF150S36CQHD	AC90~305V	36V	18V~36V	4.2A	91%	150W	231x68x38.8/1.05kg	Built-in
UPF150S48CQHD	AC90~305V	48V	24V~48V	3.2A	91%	150W	231x68x38.8/1.05kg	Built-in
UPF200S36CQHD	AC180~305V	36V	18V~36V	5.6A	92%	200W	241x68x38.8/1.07kg	Built-in
UPF200S48CQHD	AC180~305V	48V	24V~48V	4.2A	92%	200W	241x68x38.8/1.07kg	Built-in
UPF250S24CQHD	AC90~305V	24V	12V~24V	10.5A	91%	250W	263x72x40.8/1.4kg	Built-in
UPF250S36CQHD	AC90~305V	36V	18V~36V	7A	92%	250W	263x72x40.8/1.4kg	Built-in
UPF250S48CQHD	AC90~305V	48V	24V~48V	5.2A	92%	250W	263x72x40.8/1.4kg	Built-in

Note.

* Constant current level adjusted through output cable with 1-10Vdc or 10VPWM signal or resistance



C.V. & C.C mode with PFC 90~305VAC

- **Constant current design (12V : C.V. mode only)**
- Built-in PFC function
- Protections : Over current / Over voltage / Short circuit
- IP68 design for outdoor installations
- 100% full load burn-in test
- **Suitable for LED lighting and street & tunnel lighting applications**
- **Metal case** ● 5years warranty



- AC input voltage range : **90~305VAC(120,150,240W : 160~305VAC)**
(refer to static characteristics curve of homepage)
- Power Factor : 0.95 min.(Condition : 60%~100% rated power)
- Output current level can be adjusted through internal potentiometer : 60~100% rated output current
- Over current protection : 95~108%
(refer to "DRIVING METHODS of LED MODULE")
- Over voltage protection : 110-140% rated output voltage
- Withstanding voltage
I-O:3.75KVAC,I-FG:2KVAC,O-FG:1.5KVAC,1minute
- Isolation resistance
I-O, I-FG, O-FG : 100 M ohms/500VDC
- Working temperature : -40~+70°C
(refer to output derating curve of homepage)
- Safety standards : K61347-2-1,K61347-2-13/EN61347-1,EN61347-2-13
- EMC standards : K00015,K61547,EN61000-3-2,3,EN61547,EN55015

IP68

Model No.	Input Voltage	Output Voltage	C.C region	Output Current	Efficiency	Max. Power	Size(mm)/Weight
UPF60S12CQ2	AC90~160V	12V	C.V mode	3.75A	84%	60W	184x61.5x37.1/0.64kg
	AC160~305V			5A			
UPF60S36CQ2	AC90~160V	36V	21.6V~36V	1.3A	87%	60W	184x61.5x37.1/0.64kg
	AC160~305V			1.7A			
UPF60S48CQ2	AC90~160V	48V	28.8V~48V	0.9A	88%	60W	184x61.5x37.1/0.64kg
	AC160~305V			1.25A			
UPF80S12CQ2	AC90~160V	12V	C.V mode	5A	85%	80W	184x61.5x37.1/0.64kg
	AC160~305V			6.66A			
UPF80S36CQ2	AC90~160V	36V	21.6V~36V	1.7A	88%	80W	184x61.5x37.1/0.64kg
	AC160~305V			2.3A			
UPF80S48CQ2	AC90~160V	48V	28.8V~48V	1.3A	89%	80W	184x61.5x37.1/0.64kg
	AC160~305V			1.7A			
UPF100S12CQ2	AC90~160V	12V	C.V mode	5.9A	86%	100W	202x61.5x37.1/0.71kg
	AC160~305V			8.4A			
UPF100S36CQ2	AC90~160V	36V	18V~36V	2A	89%	100W	202x61.5x37.1/0.71kg
	AC160~305V			2.8A			
UPF100S48CQ2	AC90~160V	48V	24V~48V	1.5A	90%	100W	202x61.5x37.1/0.71kg
	AC160~305V			2.1A			
UPF120S12CQ2	AC160~305V	12V	C.V mode	10A	88%	120W	222x61.5x37.1/0.77kg
UPF120S36CQ2	AC160~305V	36V	18V~36V	3.3A	88%	120W	222x61.5x37.1/0.77kg
UPF120S48CQ2	AC160~305V	48V	24V~48V	2.5A	89%	120W	222x61.5x37.1/0.77kg
UPF150S12CQ2	AC160~305V	12V	C.V mode	12.5A	88%	150W	222x61.5x37.1/0.77kg
UPF150S36CQ2	AC160~305V	36V	18V~36V	4.2A	88%	150W	222x61.5x37.1/0.77kg
UPF150S48CQ2	AC160~305V	48V	24V~48V	3.2A	89%	150W	222x61.5x37.1/0.77kg
UPF200S12CQ2	AC90~160V	12V	C.V mode	12A	89%	192W	241x68x38.8/1.07kg
	AC160~305V			16A			
UPF200S36CQ2	AC90~160V	36V	22V~36V	4.2A	92%	200W	241x68x38.8/1.07kg
	AC160~305V			5.6A			
UPF200S48CQ2	AC90~160V	48V	30V~48V	3.15A	92%	200W	241x68x38.8/1.07kg
	AC160~305V			4.2A			
UPF240S12CQ2	AC160~305V	12V	C.V mode	18.75A	89%	225W	263x68x38.8/1.15kg
UPF240S36CQ2	AC160~305V	36V	22V~36V	6.7A	92%	240W	263x68x38.8/1.15kg
UPF240S48CQ2	AC160~305V	48V	30V~48V	5A	92%	240W	263x68x38.8/1.15kg

Note.

- * Cable for I/O connection.
- * Output current level can be adjusted through internal potentiometer



C.C mode 90~305VAC
Dimming function with PFC

- **Constant current design**
- Built-in **PFC** function
- Protections : Over current / Over voltage / Short circuit
- **IP68** design for outdoor installations
- **3 in 1 dimming function**
- 100% full load burn-in test
- **Suitable for LED lighting and street & tunnel lighting applications**
- **Metal case** ● 5years warranty



- AC input voltage range : **90~305VAC(120,150,240W : 160~305VAC)**
(refer to static characteristics curve of homepage)
- Power Factor : 0.95 min.(Condition : 60%~100% rated power)
- Output current level can be adjusted through internal potentiometer : 60~100% rated output current
- Over current protection : 95~108%
(refer to "DRIVING METHODS of LED MODULE")
- Over voltage protection : 110-140% rated output voltage
- Withstanding voltage
I-O:3.75KVAC,I-FG:2KVAC,O-FG:1.5KVAC,1minute
- Isolation resistance
I-O, I-FG, O-FG : 100 M ohms/500VDC
- Working temperature : -40~+70°C
(refer to output derating curve of homepage)
- Safety standards : K61347-2-1,K61347-2-13/EN61347-1,EN61347-2-13
- EMC standards : K00015,K61547,EN61000-3-2,3,EN61547,EN55015

IP68 SELV LPS

Model No.	Input Voltage	Output Voltage	C.C region	Output Current	Efficiency	Max. Power	Size(mm)/Weight
UPF60S36CQ2D	AC90~160V	36V	21.6V~36V	1.3A	87%	60W	184x61.5x37.1/0.64kg
	AC160~305V			1.7A			
UPF60S48CQ2D	AC90~160V	48V	28.8V~48V	0.9A	88%	60W	184x61.5x37.1/0.64kg
	AC160~305V			1.25A			
UPF80S36CQ2D	AC90~160V	36V	21.6V~36V	1.7A	88%	80W	184x61.5x37.1/0.64kg
	AC160~305V			2.3A			
UPF80S48CQ2D	AC90~160V	48V	28.8V~48V	1.3A	89%	80W	184x61.5x37.1/0.64kg
	AC160~305V			1.7A			
UPF100S36CQ2D	AC90~160V	36V	18V~36V	2A	89%	100W	202x61.5x37.1/0.71kg
	AC160~305V			2.8A			
UPF100S48CQ2D	AC90~160V	48V	24V~48V	1.5A	90%	100W	202x61.5x37.1/0.71kg
	AC160~305V			2.1A			
UPF120S36CQ2D	AC160~305V	36V	18V~36V	3.3A	88%	120W	222x61.5x37.1/0.77kg
UPF120S48CQ2D	AC160~305V	48V	24V~48V	2.5A	89%	120W	222x61.5x37.1/0.77kg
UPF150S36CQ2D	AC160~305V	36V	18V~36V	4.2A	88%	150W	222x61.5x37.1/0.77kg
UPF150S48CQ2D	AC160~305V	48V	24V~48V	3.2A	89%	150W	222x61.5x37.1/0.77kg
UPF200S36CQ2D	AC90~160V	36V	22V~36V	4.2A	92%	200W	241x68x38.8/1.07kg
	AC160~305V			5.6A			
UPF200S48CQ2D	AC90~160V	48V	30V~48V	3.15A	92%	200W	241x68x38.8/1.07kg
	AC160~305V			4.2A			
UPF240S36CQ2D	AC160~305V	36V	22V~36V	6.7A	92%	240W	263x68x38.8/1.15kg
UPF240S48CQ2D	AC160~305V	48V	30V~48V	5A	92%	240W	263x68x38.8/1.15kg

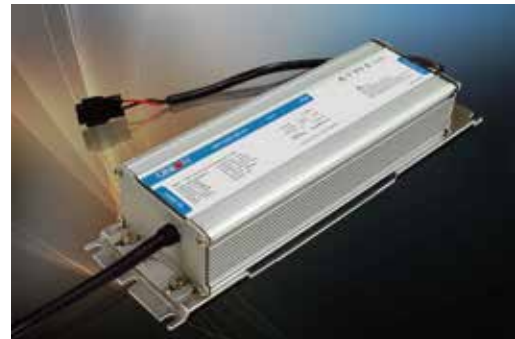
Note.

* Constant current level adjusted through output cable with 0-10Vdc or 10V PWM signal or resistance(200W : 1-10Vdc)



C.C mode with PFC
180~305VAC

- **Constant current design**
- Built-in **PFC** function
- Protections : Over current / Over voltage / Short circuit / Over temperature
- **IP68** design for outdoor installations
- 100% full load burn-in test
- **Suitable for LED lighting and street & tunnel lighting applications**
- **Metal case (F30C7P : Plastic case)**
- 5years warranty



- AC input voltage range : **180~305VAC(30~80W : 180~264VAC)**
- Power Factor : 0.95 min.(Condition : 60%~100% rated power)
- Output current level can be adjusted through internal potentiometer : 60~100% rated output current
- Over current protection : 95~108% (refer to "DRIVING METHODS of LED MODULE")
- Over voltage protection : 110-140% rated output voltage
- Withstanding voltage
I-O:3.75KVAC,I-FG:2KVAC,O-FG:1.5KVAC,1minute
- Isolation resistance
I-O, I-FG, O-FG : 100 M ohms/500VDC
- Working temperature : -40~+70°C (refer to output derating curve of homepage)
- Safety standards : K61347-1,K61347-2-13
- EMC standards : K00015,K61547

IP68 **SELV LPS**

Model No.	Input Voltage	Output Voltage	Output Current	Efficiency	Max. Power	Size(mm)/Weight	OTP
UPF30S30-C7P	AC180~264V	36V	0.7A	85%	25W	146.5x42x38/0.3kg	-
UPF30S30-C7	AC180~264V	36V	0.7A	85%	25W	200x61.5x36.8/0.67kg	-
UPF50S60-C7	AC180~264V	70V	0.7A	88%	50W	200x61.5x36.8/0.67kg	-
UPF60S60-C7	AC180~264V	84V	0.7A	88%	60W	224.6x61.5x36.8/0.77kg	Built-in
UPF80S90-C7	AC180~264V	110V	0.7A	89%	80W	224.6x61.5x36.8/0.77kg	Built-in
UPF100S120-C7	AC180~305V	160V	0.7A	90%	100W	198.6x61.5x36.8/0.76kg	Built-in
UPF125S150-C7	AC180~305V	175V	0.7A	92%	125W	223x68x38.8/0.95kg	Built-in
UPF150S180-C7	AC180~305V	215V	0.7A	93%	150W	223x68x38.8/0.95kg	Built-in
UPF200S240-C7	AC180~305V	250V	0.7A	93%	200W	241 x68x38.8/1.05kg	Built-in

Note.

- * Cable for I/O connection.
- * Output current level can be adjusted through internal potentiometer



C.C mode with PFC
180~305VAC

- **Constant current design**
- Built-in **PFC** function
- Protections : Over current / Over voltage / Short circuit / Over temperature
- **IP68** design for outdoor installations
- **3 in 1 dimming function**
- 100% full load burn-in test
- **Suitable for LED lighting and street & tunnel lighting applications**
- **Metal case (F30C7PD : Plastic case)**
- 5years warranty



- AC input voltage range : **180~305VAC(30~80W : 180~264VAC)**
- Power Factor : 0.95 min.(Condition : 60%~100% rated power)
- Output current level can be adjusted through internal potentiometer : 60~100% rated output current
- Over current protection : 95~108% (refer to "DRIVING METHODS of LED MODULE")
- Over voltage protection : 110-140% rated output voltage
- Withstanding voltage
I-O:3.75KVAC,I-FG:2KVAC,O-FG:1.5KVAC,1minute
- Isolation resistance
I-O, I-FG, O-FG : 100 M ohms/500VDC
- Working temperature : -40~+70°C (refer to output derating curve of homepage)
- Safety standards : K61347-1,K61347-2-13
- EMC standards : K00015,K61547

IP68 SELV LPS

Model No.	Input Voltage	Output Voltage	Output Current	Efficiency	Max. Power	Size(mm)/Weight	OTP
UPF30S30-C7PD	AC180~264V	36V	0.7A	85%	25W	146.5x42x38/0.3kg	-
UPF30S30-C7D	AC180~264V	36V	0.7A	85%	25W	200x61.5x36.8/0.67kg	-
UPF50S60-C7D	AC180~264V	70V	0.7A	88%	50W	200x61.5x36.8/0.67kg	-
UPF60S60-C7D	AC180~264V	84V	0.7A	88%	60W	224.6x61.5x36.8/0.77kg	Built-in
UPF80S90-C7D	AC180~264V	110V	0.7A	89%	80W	224.6x61.5x36.8/0.77kg	Built-in
UPF100S120-C7D	AC180~305V	160V	0.7A	90%	100W	198.6x61.5x36.8/0.76kg	Built-in
UPF125S150-C7D	AC180~305V	175V	0.7A	92%	125W	223x68x38.8/0.95kg	Built-in
UPF150S180-C7D	AC180~305V	215V	0.7A	93%	150W	223x68x38.8/0.95kg	Built-in
UPF200S240-C7D	AC180~305V	250V	0.7A	93%	200W	241x68x38.8/1.05kg	Built-in

Note.

* Constant current level adjusted through output cable with 1-10Vdc or 10V PWM signal or resistance



C.C mode with PFC
90~305VAC



- **Constant current design**
- Built-in **PFC** function
- Protections : Over current / Over voltage / Short circuit / Over temperature
- **IP68** design for outdoor installations
- Output voltage and current level can be adjusted through internal potentiometer
- **3 in 1 dimming function**
- 100% full load burn-in test
- **Suitable for LED lighting and street & tunnel lighting applications**
- **Metal case (F30CQHPD-EX : Plastic case)**
- 5years warranty



- AC input voltage range : **90~305VAC**
(30,50,75W:180~264VAC/200W:180~305VAC)
- Power Factor : 0.95min(Condition : 60%~100% rated Power)
- Output voltage and current level can be adjusted through internal potentiometer
 - Voltage adj. range : ±10% rated output voltage (but,do not use over the rated power)
 - Current adj. range : fixed
- Over current protection : 95~108% (refer to "DRIVING METHODS of LED MODULE")
- Over voltage protection : 115-140% rated output voltage
- Withstanding voltage
I-O : 3.75KVAC,I-FG : 2KVAC,O-FG : 1.5KVAC, 1minute
- Isolation resistance
I-O,I-FG,O-FG : 100M ohms/500VDC
- Working temperature :
-40~+70°C(refer to output derating curve of homepage)
- Safety standards : K61347-1,K61347-2-13 / J61347-1,61347-2-13
- EMC standards : K00015,K61547 / J55015

IP68 SELV LPS

Model No.	Input Voltage	Output Voltage	Output Current	Efficiency	Max. Power	Size(mm)/Weight	OTP
UPF30S36CQHPD-EX	AC180~264V	36V	0.7A	85%	25W	146.5x42x38/0.3kg	-
UPF30S36CQHD-EX	AC180~264V	36V	0.7A	85%	25W	174x61.5x36.8/0.66kg	-
UPF50S36CL2D-EX	AC180~264V	36V	1.5A	87%	50W	184x61.5x37.1/0.64kg	-
UPF60S36CQHD-EX	AC90~305V	36V	1.4A	86%	50W	174x61.5x36.8/0.66kg	Built-in
UPF75S36CL2D-EX	AC180~264V	36V	2.2A	87%	75W	184x61.5x37.1/0.64kg	-
UPF80S36CQHD-EX	AC90~305V	36V	2.1A	88%	75W	198.6x61.5x36.8/0.76kg	Built-in
UPF100S36CQHD-EX	AC90~305V	36V	2.8A	90%	100W	223x68x38.8/1.04kg	Built-in
UPF150S36CQHD-EX	AC90~305V	36V	4.2A	91%	150W	231x68x38.8/1.05kg	Built-in
UPF200S36CQHD-EX	AC180~305V	36V	5.6A	91%	200W	241x68x38.8/1.07kg	Built-in
UPF250S36CQHD-EX	AC90~305V	36V	7A	92%	250W	268.8x76.3x45.2/1.5kg	Built-in



C.C mode with PFC
180~264VAC

- Constant current design
- Built-in PFC function
- Protections : Over current / Short circuit
- IP68 design for outdoor installations
- 100% full load burn-in test
- Suitable for LED lighting and street & tunnel lighting applications
- Metal case
- 5years warranty



- AC input voltage range : **180~264VAC**
(refer to static characteristics curve of homepage)
- Power Factor : 0.9 min.(Condition : 60%~100% rated power)
- Output current level can be adjusted through internal potentiometer : 60~100% rated output current
- Over current protection : 95~108%
(refer to "DRIVING METHODS of LED MODULE")
- Withstanding voltage
I-O:3.75KVAC,I-FG:2KVAC,O-FG:1.5KVAC,1 minute
- Isolation resistance
I-O, I-FG, O-FG : 100 M ohms/500VDC
- Working temperature : -30~+70°C
(refer to output derating curve of homepage)
- Safety standards : K61347-1,K61347-2-13
- EMC standards : K00015,K61547

IP68 SELV LPS

Model No.	Input Voltage	Output Voltage	C.C region	Output Current	Efficiency	Max. Power	Size(mm)/Weight
UPF50S36CP2	AC180~264V	36V	20V~36V	1.25A	87%	45W	139x52.6x30/0.35kg
UPF50S48CP2	AC180~264V	48V	26V~48V	0.94A	88%	45W	139x52.6x30/0.35kg
UPF60S48CP2	AC180~264V	48V	28.8V~48V	1.25A	88%	60W	174x61.5x37.1/0.60kg



ENCLOSED SWITCHING POWER SUPPLY

UP-LHE SERIES

UP SERIES



Single output
90~264VAC



- Constant voltage design
- **LOW POWER CONSUMPTION HIGH EFFICIENCY(Slim type only)**
- Low cost & Slim Type
- Protections : Over load/Over voltage/Short circuit
- Cooling by free air convection
- Design for indoor **LED lighting and LED sign with waterproof box applications**
- 100% full load burn-in test
- 3years warranty
- 2yeras warranty(Normal Type)



- AC input voltage range : **90~264VAC/180~264VAC(Normal type 200~1000W)**
- DC adjustment range : Fixed,can be modified within $\pm 5\%$ rated output voltage. (but, do not use over the rated Power)
- Over load protection : Over 110% hiccup mode, auto-recovery
- Over voltage protection : 115-135% rated output voltage
- No load power consumption :
A-35FAL, A-50FAL<0.2W : A-75FAM, A-100FAN<0.4W :
A-150FAO<0.5W : A-200FAK, A-350FAK<0.75W
- Withstanding voltage : I-O : 3KVAC,I-FG : 2KVAC,O-FG : 0.5KVAC, 1minute
- Isolation resistance : I-O,I-FG,O-FG : 100 M ohms/500VDC
- Working temperature : -30~+50 $^{\circ}$ C , -30~+70 $^{\circ}$ C
(refer to output derating curve of homepage)
- Safety standards : EN60950-1,K61347-1,K61347-2-13
- EMC standards : EN55022,K00015,K61547,K61000-4-2,3,4,5,6,11

UP-LHE Series / Slim Type



Model No.	Input Voltage	Output Voltage	Output Current	Efficiency	Max. Power	Size(mm)/Weight
A-35FAL-12	AC90~264V	12V	3A	85%	35W	99x82x30/0.23kg
A-35FAL-24	AC90~264V	24V	1.5A	87%	35W	99x82x30/0.23kg
A-50FAL-12	AC90~264V	12V	4.2A	85%	50W	99x82x30/0.23kg
A-50FAL-24	AC90~264V	24V	2.2A	87%	50W	99x82x30/0.23kg
A-75FAM-12	AC90~264V	12V	6A	87%	72W	99x97x30/0.28kg
A-75FAM-24	AC90~264V	24V	3.2A	90%	75W	99x97x30/0.28kg
A-100FAN-12	AC90~264V	12V	8.5A	87%	100W	129x97x30/0.33kg
A-100FAN-24	AC90~264V	24V	4.5A	89%	100W	129x97x30/0.33kg
A-150FAO-12	AC90~132V AC180~264V	12V	12.5A	87%	150W	159x97x30/0.43kg
A-150FAO-24	AC90~132V AC180~264V	24V	6.5A	89%	150W	159x97x30/0.43kg
A-200FAK-5	AC90~132V AC180~264V	5V	40A	86%	200W	215x115x29.5/0.75kg
A-200FAK-12	AC90~132V AC180~264V	12V	17A	87%	200W	215x115x29.5/0.75kg
A-200FAK-24	AC90~132V AC180~264V	24V	8.8A	89%	200W	215x115x29.5/0.75kg
A-350FAK-5	AC90~132V AC180~264V	5V	60A	83%	300W	215x115x29.5/0.75kg
A-350FAK-12	AC90~132V AC180~264V	12V	29A	86%	350W	215x115x29.5/0.75kg
A-350FAK-24	AC90~132V AC180~264V	24V	14.6A	88%	350W	215x115x29.5/0.75kg

Normal Type

Model No.	Input Voltage	Output Voltage	Output Current	Efficiency	Max. Power	Size(mm)/Weight
A-15NR-12	AC90~264V	12V	1.3A	78%	15W	85x58.5x33/0.15kg
A-15NR-24	AC90~264V	24V	0.7A	80%	15W	85x58.5x33/0.15kg
A-200-12	AC180~264V	12V	17A	84%	200W	200x110.5x50.5/0.70kg
A-200-24	AC180~264V	24V	8.3A	86%	200W	200x110.5x50.5/0.70kg
A-600-12	AC180~264V	12V	50A	84%	600W	241x124x65/1.48kg
A-600-24	AC180~264V	24V	25A	87%	600W	241x124x65/1.48kg
A-1000-12	AC180~264V	12V	83A	82%	1000W	291x133x68/2.7kg
A-1000-24	AC180~264V	24V	42A	85%	1000W	291x133x68/2.7kg

Single output
85~264VAC



● Constant voltage design

- Protections : Over load/Over voltage/Short circuit/Over temp.
- Cooling by free air convection(Cooling by Fan : 300~1500W)
- Design for indoor LED lighting applications
- 100% full load burn-in test
- 3years warranty



- AC input voltage range : 85-264VAC(15-100W) / selectable by switch(150-850W) / 200-240VAC(1000-1500W)
- DC adjustment range : Fixed,can be modified within ±5% rated output voltage. (but, do not use over the rated Power)
- Over load protection : Over 110% of rating, auto-recovery
- Over voltage protection : 115-140% rated output voltage
- Withstanding voltage
I-O : 3KVAC, I-FG : 1.5KVAC,O-FG : 0.5KVAC, 1minute
- Isolation resistance
I-O, I-FG, O-FG : 100 M ohms/500VDC
- Working temperature : -10~+60°C(refer to output derating curve of homepage)
- Safety standards : K61347-1 ,K61347-2-13/EN61347-1,EN61347-2-13
- EMC standards : K00015,K61547/EN61000-3-2,3,EN61204-3,EN55022



Power	Input	Output					Size / Weight
		Model No.					
15W	AC85-264V	5V3A	9V1.6A	12V1.2A	15V1A	24V0.6A	97.5 x 64 x 32/0.23kg
		UP15S05	UP15S09	UP15S12	UP15S15	UP15S24	
30W	AC85-264V	5V6A	9V3.3A	12V2.5A	15V2A	24V1.2A	98 x 79 x 37/0.26kg
		UP30S05	UP30S09	UP30S12	UP30S15	UP30S24	
50W	AC85-264V	5V10A	9V5.5A	12V4.1A	15V3.3A	24V2A	125 x 83 x 40/0.31kg
		UP50S05	UP50S09	UP50S12	UP50S15	UP50S24	
75W	AC85-264V	5V15A		12V6.2A	15V5A	24V3.1A	135 x 96 x 40/0.41kg
		UP75S05		UP75S12	UP75S15	UP75S24	
100W	AC85-264V			12V8.3A	15V6.6A	24V4.1A	135 x 96 x 40/0.41kg
				UP100S12	UP100S15	UP100S24	
150W	AC90-132V	5V30A		12V12.5A	15V10A	24V6.2A	207 x 105 x 46/0.85kg
	AC180-264V	UP150S05		UP150S12	UP150S15	UP150S24	
200W	AC90-132V			12V16.6A	15V13.3A	24V8.3A	231 x 114 x 50/0.9kg
	AC180-264V			UP200S12	UP200S15	UP200S24	
220W	AC90-132V			12V18.3A	15V14.6A	24V9.1A	231 x 114 x 50/0.9kg
	AC180-264V			UP220S12	UP220S15	UP220S24	
300W	AC90-132V			12V25A		24V12.5A	231 x 114 x 50/0.95kg
	AC180-264V			UP300S12		UP300S24	
400W	AC90-132V			12V33.3A		24V16.6A	231 x 114 x 70/1.2kg
	AC180-264V			UP400S12		UP400S24	
500W	AC90-132V			12V41.6A		24V20.8A	254 x 146 x 70.6/2kg
	AC180-264V			UP500S12		UP500S24	
600W	AC90-132V			12V50A		24V25A	254 x 146 x 70.6/2kg
	AC180-264V			UP600S12		UP600S24	
750W	AC90-132V			12V6.25A		24V31.2A	285 x 170 x 85/2.8kg
	AC180-264V			UP750S12		UP750S24	
850W	AC90-132V			12V70.8A		24V35.4A	285 x 170 x 85/2.8kg
	AC180-264V			UP850S12		UP850S24	
1000W	AC180-264V			12V83.3A		24V41.6A	350 x 153 x 80/3.5kg
				UP1000S12		UP1000S24	
1200W	AC180-264V					24V50A	376 x 200 x 105/5.2kg
						UP1200S24	
1500W	AC180-264V					24V62.5A	376 x 200 x 105/5.2kg
						UP1500S24	

QUICK SELECTION CHART for LED CONVERTER

Series Name		PFC	Input (Vac)	Output (Vdc)	C.V or C.C	Potted	IP	OTP	Dimming	Vo/Io Adj	Case	Warranty (years)	Page	
Slim Type Converter	UP-F	30		90-264	12/24	C.V	⊙	62			Plastic	3	4	
	UP-W2F	30		160-277	12	C.V	⊙	62	⊙		Plastic	3	5	
		60		160-277	12/24	C.V	⊙	62	⊙		Plastic	3	5	
Outdoor Light Converter	UP-W2C	100/150/200/300		160-277	12/24	C.V	⊙	68	⊙		Metal	3	7	
	UP-W2SC	100/150/200/300		160-277	12/24	C.V	⊙	68			Metal	2	8	
	UP-W2(V1)	10/20		160-277	12/24	C.V		68			Plastic	3	9	
		30/40/60/100		160-277	12/24	C.V	⊙	68	⊙		Plastic	3	9	
		40/60/100/150/200/300		160-277	12/24	C.V	⊙	68	⊙		Metal	3	10	
	UP-W2S	100/150/200/300		160-277	12	C.V	⊙	68	⊙		Metal	2	11	
	UP-WQ	8/12/16/20/25/35/40/60		90-277	12	C.V	⊙	68	⊙		Plastic	3	12	
		100/150		90-277	12	C.V	⊙	68	⊙		Metal	3	12	
	UP-WH	60/100/120		90-305	12	C.V	⊙	68	⊙		Metal	5	13	
	UP(F)-MH	120/180	180MH	90-305	12	C.V	⊙	68	⊙		Metal	5	13	
	UP-TH	60		90-305	12	C.V	⊙	68	⊙		Metal	5	14	
	UP-W1	40/60		90-132	12	C.V	⊙	68	⊙		Plastic	3	15	
		100/150		90-132	12	C.V	⊙	68	⊙		Metal	3	15	
	UPF-WQ	100/150/200/300	⊙	90-305	12/24	C.V	⊙	68	⊙		Metal	3	16	
	UPF-WQ2	80/100/150/200/250/300	⊙	90-305	12	C.V	⊙	68			Metal	5	17	
	UPF-CQ2	60/80/100/200	⊙	90-305	12	C.V	⊙	68			lo	Metal	5	20
		36/48			C.C	lo								
		120/150		160-305	12	C.V					lo			
					36/48	C.C					lo			
	UPF-CQ2D	60/80/100/200	⊙	90-305	36/48	C.C	⊙	68		⊙	lo	Metal	5	21
		120/150		180-305										
	UPF-C7	30	⊙	180-264	36	C.C	⊙	68	⊙		lo	Metal	5	22
		50	⊙	180-264	70									
		60	⊙	180-264	84									
		80	⊙	180-264	110									
100		⊙	180-305	140										
125		⊙	180-305	175										
150		⊙	180-305	215										
200		⊙	180-305	250										
UPF-C7D	30	⊙	180-264	36	C.C	⊙	68	⊙	⊙	lo	Metal	5	23	
	50	⊙	180-264	70										
	60	⊙	180-264	84										
	80	⊙	180-264	110										
	100	⊙	180-305	140										
	125	⊙	180-305	175										
	150	⊙	180-305	215										
	200	⊙	180-305	250										
UPF-EX	30	⊙	180-264	36	C.C	⊙	68	⊙	⊙	⊙	Metal	5	24	
	60/80/100/150/250		90-305											
	200		180-305											
UPF-CQH	30	⊙	180-264	36	C.C	⊙	62			⊙	Plastic	5	18	
	30	⊙	180-264	36/48	C.C	⊙	68			⊙	Metal	5		
	200	⊙	180-305	36/48	C.V + C.C	⊙	68	⊙		⊙	Metal	5		
	40/60/80/100/150/250	⊙	90-305	12	C.V	⊙	68	⊙			Metal	5		
		⊙	90-305	24/36/48	C.V + C.C	⊙	68	⊙		⊙	Metal	5		
UPF-CQHD	30	⊙	180-264	36	C.C	⊙	62		⊙	⊙	Plastic	5	19	
	30	⊙	180-264	36/48	C.C	⊙	68		⊙	⊙	Metal	5		
	200	⊙	180-305	36/48	C.C	⊙	68	⊙	⊙	⊙	Metal	5		
	40/60/80/100/150/250	⊙	90-305	24/36/48	C.C	⊙	68	⊙	⊙	⊙	Metal	5		
UPF-CP2	60/100	⊙	180-264	48	C.C	⊙	68			⊙	Metal	5	25	



UP-R SERIES

50~240W Single output

- **Constant voltage design**

- Built in PFC(240W)
- Protections : Overload / Over voltage / Short circuit
- Cooling by free air convection
- Din-rail installations
- LED indicator for power on
- 100% full load burn-in test
- Suitable for industrial applications
- 3years warranty

Din-Rail Power Supply



UP-N SERIES

15~150W Single output

- **Constant voltage design**

- Non-cover type
- Protection : Over load/Over voltage/Shot circuit
- Suitable for industrial applications
- 3years warranty

Open Frame Switching Power Supply



DC-Output type

3~40A DC Input / DC Output

1 PHASE type

2~50A DC or AC Input / AC-Output

2,3 PHASE type

15~50A DC or AC Input / AC-Output

- Normally open
- Built-in LED indicator
- Suitable for industrial applications
- 3years warranty

Solid state Relay



1 PHASE type

3~400A

3 PHASE type

10~1000A

- Excellent filtering for normal mode and common mode noise
- Low leakage
- Suitable for industrial & medical equipment, OA, FA applications
- 3years warranty

Noise Filter



*102-12FL, Chunui Techno park1, 36, Bucheon-Ro 198 beon-gil,
Bucheon-Si, Gyeonggi-do, 14557, Rep. of Korea*

*Tel. +82-32-668-9560~4 Fax. +82-32-668-9565
www.unionelecom.co.kr*

