



LBY LED

SIGNS NEVER
BEEN SO
EASY

SHENZHEN LINGBENYANG INDUSTRY CO., LTD.

Tel: +86-755-83544570
Website: www.lbyled.com

Fax: +86-755-83056229
E-mail: info@szlby.cn

Company Address:
Rm. WS, 9F, LuBan Building, Hongli West Road, Futian District,
Shenzhen, China 518034

Factory Address:
No. B, Xinyongfeng Industrial Area, Yingrenshi Village, Shiyuan Town,
Bao'an District, Shenzhen, China 518000

WWW.LBYLED.COM



CE TUV RoHS



Founded: 2004

Employees: 500

Factory Area: 10 000m²

COMPANY PROFILE

LBY is a professional manufacturer that specializes in development, production, marketing of LED Light Source for worldwide sign industry. Since 2004, we were devoted to design and produce more efficient and easy-installation LED products, at the same time, we also offer customized design and work instruction serves. We are always trying to save total cost for customers.

Today, LBY, the name means reliable quality, higher light efficiency and high cost performance. We now have 22 domestic offices and built very strong partner relationships with our distributors from more than 50 countries. The company is also very active providing its products and services to national projects and government signs.

The employees feel proud of working in such a top LED supplier for signs, with the most knowledgeable team and technologically advanced products, we are looking forward to work with our customers throughout the world.

PHILOSOPHY

Value: Simple, Professional, Creative

Goal: First Choice of Worldwide LED Signs

Mission: Lower Total Cost, Reliable Product



CE TUV RoHS

BACK LIGHTING SERIES



Features

- Sourced by high output SMD2835, good color conformity and no spot.
- 99.99% gold thread, pure copper bracket coated with silver.
- Constant current driving technology guarantees stable performance of product.
- SDCM ≤ 5 each BIN.
- Special lens design, 170° beaming angle with even light.
- Overmoulded: anti-dusting, anti-moisture, waterproof, anti-shock.
- 50 pcs Max.(constant current) /20 pcs Max.(constant voltage) in a series connection.
- CE, ROHS and UL certified.

Application

- Best for 3-6 cm depth illuminate letter or light box at airports, metros, banks, buildings and shopping malls, etc.



Part No.	Input Vol.	Dimensions(mm)	Lumen/lm	Power(W/pcs)	LED Qty/pcs	CCT/K	LED Type
ZE01BB3	12V	36*17.5*6.2	44	0.4	1	7000	2835
ZE02BB3	12V	56*17.5*6.2	88	0.8	2	7000	2835

BACK LIGHTING SERIES



Features

- Sourced by high output SMD2835, good color conformity and no spot.
- 99.99% gold thread, pure copper bracket coated with silver.
- Constant current driving technology guarantees stable performance of product.
- SDCM ≤ 5 each BIN.
- Special lens design, 170° beaming angle with even light.
- Overmoulded: anti-dusting, anti-moisture, waterproof, anti-shock.
- 30 pcs Max.(constant current) /20 pcs Max.(constant voltage) in a series connection.
- CE, ROHS and UL certified.

Application

- Best for 6-12 cm depth illuminate letter or light box at airports, metros, banks, buildings and shopping malls, etc.



Part No.	Input Vol.	Dimensions(mm)	Lumen/lm	Power(W/pcs)	LED Qty/pcs	CCT/K	LED Type
ZE03BB3	12V	80*17.5*6.2	130	1.2	3	7000	2835
ZE04BB3	12V	45*43*6.2	180	1.6	4	7000	2835

BACK LIGHTING SERIES



Features

- Sourced by high output SMD2835, good color conformity and no spot.
- 99.99% gold thread, pure copper bracket coated with silver.
- Constant current driving technology guarantees stable performance of product.
- SDCM ≤ 5 each BIN.
- Special lens design, 160° beaming angle with even light.
- Overmoulded: anti-dusting, anti-moisture, waterproof, anti-shock.
- 50 pcs Max. in a series connection.
- CE, ROHS and UL certified.

Application

- Best for 8-15 cm depth signs at airports, metros, banks, buildings and shopping malls, etc.



Part No.	Input Vol.	Dimensions(mm)	Lumen/lm	Power(W/pcs)	LED Qty/pcs	CCT/K	LED Type
ZE02QB7	12V	52.4*15*9.2	70	0.72	2	7000	2835
ZE03QB7	12V	74.4*15*9.2	106	1.1	3	7000	2835

BACK LIGHTING SERIES



Features

- Sourced by high output SMD5730, good color conformity and no spot.
- 99.99% gold thread, pure copper bracket coated with silver.
- SDCM ≤ 5 each BIN.
- Special lens design, 160° beaming angle with even light.
- Overmoulded: anti-dusting, anti-moisture, waterproof, anti-shock.
- 20 pcs Max. in a series connection.
- CE, ROHS and UL certified.

Application

- Best for 8-15 cm depth signs at airports, metros, banks, buildings and shopping malls, etc.



Part No.	Input Vol.	Dimensions(mm)	Lumen/lm	Power(W/pcs)	LED Qty/pcs	CCT/K	LED Type
ZL03QA4	12V	85*17.5*8.4	110	1.32	3	7000	5730
ZE03BB5	12V	87*17.5*7.2	110	1.32	3	7000	SAMSUNG LED

BACK LIGHTING SERIES



Features

- Sourced by high output SMD2835/5730, good color conformity and no spot.
- 99.99% gold thread, pure copper bracket coated with silver.
- SDCM ≤ 5 each BIN.
- Special lens design, 160° beaming angle with even light.
- Overmoulded: anti-dusting, anti-moisture, waterproof, anti-shock.
- 20 pcs Max. in a series connection.
- CE, ROHS and UL certified.

Application

- Best for 8-15 cm depth signs at airports, metros, banks, buildings and shopping malls, etc.



Part No.	Input Vol.	Dimensions(mm)	Lumen/lm	Power(W/pcs)	LED Qty/pcs	CCT/K	LED Type
ZE02QA2	12V	50*15*8.6	45	0.72	2	7000	2835
ZE03QA1	12V	74*15*8.6	70	0.72	3	7000	2835
ZL03QA1	12V	80*18*8.0	110	1.32	3	7000	5730

BACK LIGHTING SERIES



Features

- Sourced by high output SMD5050, good color conformity and no spot.
- 99.99% gold thread, pure copper bracket coated with silver.
- SDCM ≤ 5 each BIN.
- Special lens design, 160° beaming angle with even light.
- Overmoulded: anti-dusting, anti-moisture, waterproof, anti-shock.
- 20 pcs Max. in a series connection.
- CE, ROHS and UL certified.

Application

- Best for 8-15 cm depth signs at airports, metros, banks, buildings and shopping malls, etc.



Part No.	Input Vol.	Dimensions(mm)	Lumen/lm	Power(W/pcs)	LED Qty/pcs	CCT/K	LED Type
ZH03QA5-Q	12V	85*17.5*8.4	R6 G22 B5	0.65	3	RGB	5050
ZH04QA1-Q	12V	33*33*5	R6 G22 B5	1.32	4	RGB	5050

MINI MODULE SERIES



Features

- Sourced by high output SMD2835, good color conformity and no spot.
- 99.99% gold thread, pure copper bracket coated with silver.
- SDCM ≤ 5 each BIN.
- Special lens design, 120° beaming angle with even light.
- Well sealed: anti-dusting, anti-moisture, waterproof, anti-shock.
- 20 pcs Max. in a series connection.
- CE, RoHS and UL certified.

Application

- Apply to 3-6cm depth signs at airports, metros, banks, buildings and shopping malls, etc.



Part No.	Input Vol.	Dimensions(mm)	Lumen/lm	Power(W/pcs)	LED Qty/pcs	CCT/K	LED Type
ZE02QA1	12V	30*7.5*4.3	20	0.32	2	7000	2835

BACK LIGHTING SERIES



Features

- Sourced by high output SMD2835, good color conformity and no spot.
- 99.99% gold thread, pure copper bracket coated with silver.
- SDCM ≤ 5 each BIN.
- Special lens design, 170° beaming angle with even light.
- Overmoulded on alluminum PCB: anti-dusting, anti-moisture, waterproof, anti-shock.
- 38 pcs Max. in a series connection.
- CE, ROHS and UL certified.

Application

- Best for 3.5-10 cm depth single-sided light box at airports, metros, banks, buildings and shopping malls, etc.



Part No.	Input Vol.	Dimensions(mm)	Lumen/lm	Power(W/pcs)	LED Qty/pcs	CCT/K	LED Type
ZE01BA2	12V	35*22.5*7.09	55	0.72	1	7000	2835

BACK LIGHTING SERIES



Features

- Sourced by high output SMD2835/3030, good color conformity and no spot.
- 99.99% gold thread, pure copper bracket coated with silver.
- SDCM ≤ 5 each BIN.
- Special lens design, 170°/160° beaming angle with even light.
- Overmoulded: anti-dusting, anti-moisture, waterproof, anti-shock.
- 50/20 pcs Max. in a series connection.
- CE, ROHS and UL certified.

Application

- Best for 3.5-15 cm depth single-sided light box at airports, metros, banks, buildings and shopping malls, etc.



Part No.	Input Vol.	Dimensions(mm)	Lumen/lm	Power(W/pcs)	LED Qty/pcs	CCT/K	LED Type
ZE01BB2	12V	37*25.5*7.1	55	0.72	1	7000	2835
ZF01BB2	12V	43*23*7.8	125	1.32	1	7000	3030

BACK LIGHTING SERIES



Features

- Sourced by high output SMD LG LED, good color conformity and no spot.
- 99.99% gold thread, pure copper bracket coated with silver.
- SDCM ≤ 5 each BIN.
- Special lens design, 170° beaming angle with even light.
- Overmoulded: anti-dusting, anti-moisture, waterproof, anti-shock.
- 12 pcs Max. in a series connection.
- CE, ROHS and UL certified.

Application

- Best for 10-20 cm depth signs at airports, metros, banks, buildings and shopping malls, etc.



Part No.	Input Vol.	Dimensions(mm)	Lumen/lm	Power(W/pcs)	LED Qty/pcs	CCT/K	LED Type
ZX03QB1	12/24V	180*26*8.4	500	4	3	7000	LG LED

BACK LIGHTING SERIES



Features

- Sourced by high output SMD 3030LED, good color conformity and no spot.
- 99.99% gold thread, pure copper bracket coated with silver.
- SDCM ≤ 5 each BIN.
- Special lens design, 170° beaming angle with even light.
- Overmoulded: anti-dusting, anti-moisture, waterproof, anti-shock.
- 9 pcs Max. in a series connection.
- CE, ROHS and UL certified.

Application

- Best for 10-20 cm depth signs at airports, metros, banks, buildings and shopping malls, etc.



Part No.	Input Vol.	Dimensions(mm)	Lumen/lm	Power(W/pcs)	LED Qty/pcs	CCT/K	LED Type
ZF09QB1	12V	94*94*7.8	650	7	9	7000	3030

BACK LIGHTING SERIES



Features

- Sourced by high output SMD Seoul 1919, good color conformity and no spot.
- 99.99% gold thread, pure copper bracket coated with silver.
- SDCM ≤ 5 each BIN.
- Special lens design, 175° beaming angle with even light.
- Special overmoulded construction: anti-dusting, anti-moisture, waterproof, anti-shock.
- 12 pcs Max. in a series connection.
- CE, RoHS and UL certified.

Application

- Best for 10-18cm depth light box at airports, metros, banks, buildings and shopping malls, etc.



Part No.	Input Vol.	Dimensions(mm)	Lumen/lm	Power(W/pcs)	LED Qty/pcs	CCT/K	LED Type
ZW03WB1	12V	124*82*11	600	7	3	7000	Seoul LED

BACK LIGHTING SERIES



Features

- Sourced by high output SMD2835, good color conformity and no spot.
- 99.99% gold thread, pure copper bracket coated with silver.
- SDCM ≤ 5 each BIN.
- Special lens design, 170° beaming angle with even light
- Well sealed: anti-dusting, anti-moisture, waterproof, anti-shock.
- 20 bars Max. in a series connection.
- CE, ROHS and UL certified.

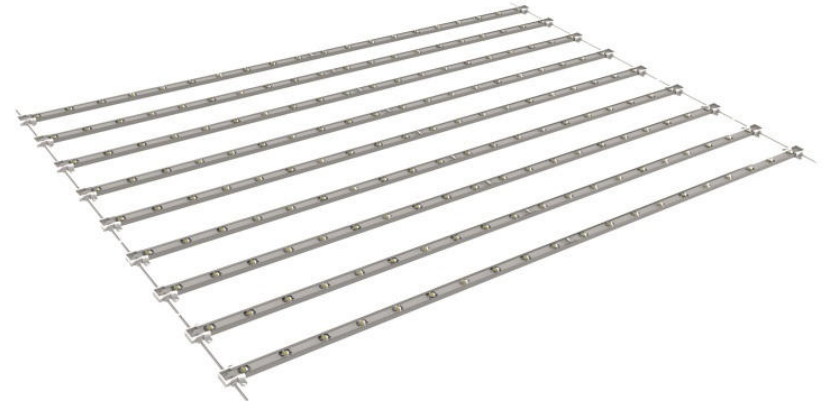
Application

- Best for 4-10cm depth single-sided light box or 10-20cm depth double-sided light box at airports, metros, banks, buildings and shopping malls, etc.



Part No.	Input Vol.	Dimensions(mm)	Lumen/lm	Power(W/pcs)	LED Qty/pcs	CCT/K	LED Type
YE08LC2-64-80	24V	640*20*7	480	6	8	7000	2835

BACK LIGHTING SERIES



Features

- Sourced by high output SMD2835, good color conformity and no spot.
- 99.99% gold thread, pure copper bracket coated with silver.
- SDCM ≤ 5 each BIN.
- Special lens design, 160° beaming angle with even light
- Well sealed: anti-dusting, anti-moisture, waterproof, anti-shock.
- 20 pcs Max. in a series connection.
- CE, ROHS and UL certified.

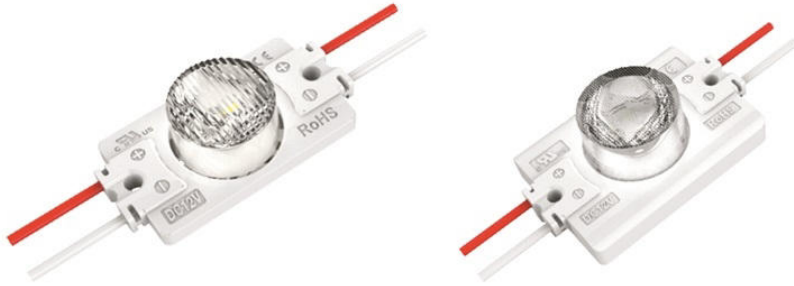
Application

- Apply to 18-40cm depth double-sided light box or 10-20cm depth single-sided light box at airports, metros, banks, buildings and shopping malls, etc.



Part No.	Input Vol.	Dimensions(mm)	Lumen/lm	Power(W/pcs)	LED Qty/pcs	CCT/K	LED Type
YE30GA1-AO-AO	12V	982*36*9.8	620	7.2	30	7000	2835

EDGE LIGHTING SERIES



Features

- Sourced by high output SMD3030/3535, good color conformity and no spot.
- 99.99% gold thread, pure copper bracket coated with silver.
- SDCM ≤ 5 each BIN.
- Special lens design, 10°65°/15°45° beaming angle with even light.
- Overmoulded: anti-dusting, anti-moisture, waterproof, anti-shock.
- 20 pcs Max. in a series connection.
- CE, ROHS and UL certified.

Application

- Best for 15-30cm depth double-sided light box or 8-20 cm depth single-sided light box at airports, metros, banks, buildings and shopping malls, etc.



Part No.	Input Vol.	Dimensions(mm)	Lumen/lm	Power(W/pcs)	LED Qty/pcs	CCT/K	LED Type
ZF01BB3	12V	43*23*11.6	125	1.32	1	7000	3030
ZX01BB2	12V	51.4*32*14.8	250	2.5	1	7000	3535

EDGE LIGHTING SERIES

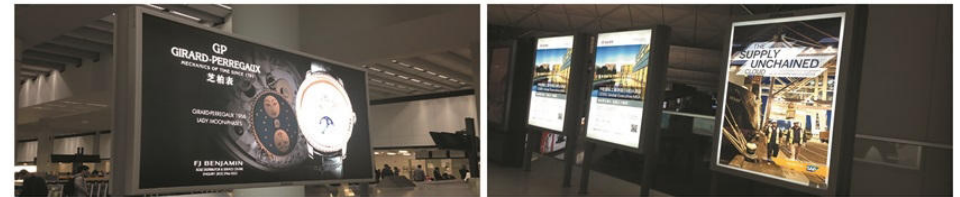


Features

- Sourced by high output SMD3030, good color conformity and no spot.
- 99.99% gold thread, pure copper bracket coated with silver.
- SDCM ≤ 5 each BIN.
- Special lens design, 10°65° beaming angle with even light.
- Overmoulded: anti-dusting, anti-moisture, waterproof, anti-shock.
- 20 pcs Max. in a series connection.
- CE, ROHS and UL certified.

Application

- Best for 15-30cm depth double-sided light box or 8-20 cm depth single-sided light box at airports, metros, banks, buildings and shopping malls, etc.



Part No.	Input Vol.	Dimensions(mm)	Lumen/lm	Power(W/pcs)	LED Qty/pcs	CCT/K	LED Type
ZF03BB1	12V	74*20*9.8	250	2.5	3	7000	3030

EDGE LIGHTING SERIES



Features

- Sourced by high output LG LED, good color conformity and no spot.
- 99.99% gold thread, pure copper bracket coated with silver.
- SDCM ≤ 5 each BIN.
- Special lens design, 10*40°/15*45° beaming angle with even light.
- Overmoulded: anti-dusting, anti-moisture, waterproof, anti-shock.
- 20/10 pcs Max. in a series connection.
- CE, ROHS and UL certified.

Application

- Best for 12-18 cm depth double-sided light box at airports, metros, banks, buildings and shopping malls, etc.



Part No.	Input Vol.	Dimensions(mm)	Lumen/lm	Power(W/pcs)	LED Qty/pcs	CCT/K	LED Type
ZW01BB3	12-24V	68*30*15	260	2	1	7000	LG LED
ZW03BB3	12-24V	142*30*15	780	6	3	7000	LG LED

EDGE LIGHTING SERIES



Features

- Sourced by high output OSRAM LED, good color conformity and no spot.
- 99.99% gold thread, pure copper bracket coated with silver.
- SDCM ≤ 3 each BIN.
- Special lens design, 15*45° beaming angle with even light.
- 20/10 pcs Max. in a series connection.
- CE, ROHS and UL certified.

Application

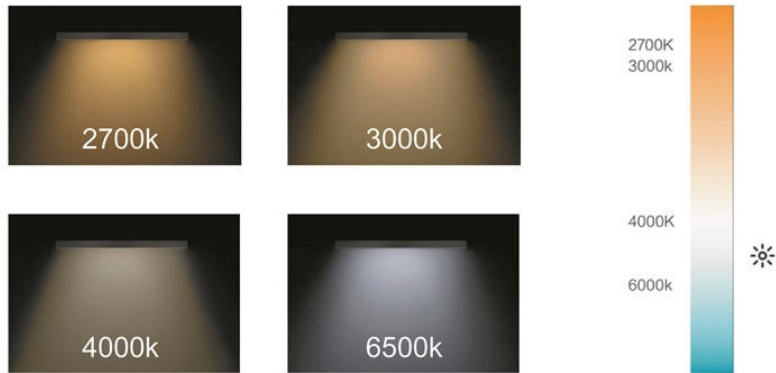
- Best for 12-40cm depth double-sided light box or 10-20cm depth single-sided light box at airports, metros, banks, buildings and shopping malls, etc.



Part No.	Input Vol.	Dimensions(mm)	Lumen/lm	Power(W/pcs)	LED Qty/pcs	CCT/K	LED Type
YX03DD1	24V	295*27.5*15.6	810	9	3	7000	OSRAM LED
YX05DD1	24V	495*27.5*15.6	1350	15	5	7000	OSRAM LED

FLEX LINEAR LIGHT

LBY LED provide full CCT range from 2300K to 12000K as well as CRI option from 75 to 95

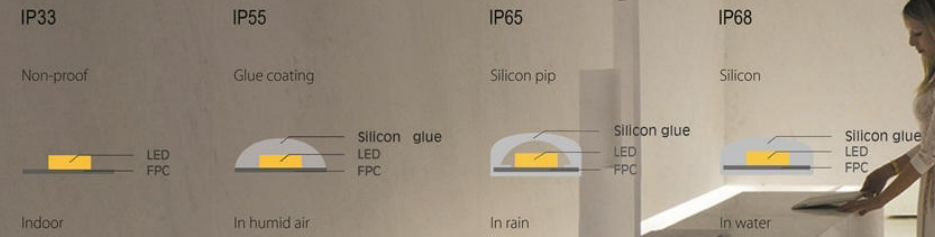


Various CRI option from 75 to 95



INGRESS PROTECTION

LBY LED provide different IP graded strips



- o 99.99% golden thread, pure copper bracket coated with silver.
- o USA Intematix phosphor with CRI > 80.
- o SDCM ≤ 5 each BIN.
- o Double layer rolled copper FPC.
- o Silicon glue sealed by automatic machine and injection caps, IP68 rated.
- o Back adhesive 300LSE 3M.
- o CE, RoHS and UL certified.

BENDABLE STRIP

 120°
  IP33
  3years

 2700k
  3000k
  4000k
  6500k



Features

- Sourced by high output 2835 LED with good color conformity.
- 99.99% gold thread, pure copper bracket coated with silver.
- USA Intematix phosphor with CRI>80.
- SDCM ≤ 5 each BIN.
- Double layer rolled copper FPC.
- 3M 300LSE tape attached.
- CE, RoHS and UL certified.

Application

- Apply to 3-6cm depth signs at airports, metros, banks, buildings and shopping malls, etc.



Part No.	Input Vol.	Dimensions(mm)	LM/LED	Power(W/M)	LED Qty/M	CCT/K	LED Type
SE60LA2-S	12V	5000*6	11	6.2	60	6500	2835

SIDE EMITTING STRIP

 120°
  IP33
  3years

 2700k
  3000k
  4000k
  6500k



Features

- Sourced by high output 335 LED with good color conformity.
- 99.99% gold thread, pure copper bracket coated with silver.
- USA Intematix phosphor with CRI>80.
- SDCM ≤ 5 each BIN.
- Double layer rolled copper FPC.
- 3M 300LSE tape attached.
- CE, RoHS and UL certified.

Application

- City lighting, landscape lighting, commercial lighting and house contour lighting, etc.



Part No.	Input Vol.	Dimensions(mm)	LM/LED	Power(W/M)	LED Qty/M	CCT/K	LED Type
SA60LA1	12/24V	5000*8	6	4.8	60	6500	335
SAC0LA1	12/24V	5000*8	6	9.6	120	6500	335

2835 STRIP

 120°
  IP33
  3years

 2700k
  3000k
  4000k
  6500k



Features

- Sourced by high output OSRAM 2835 LED with good color conformity.
- 99.99% gold thread, pure copper bracket coated with silver.
- USA Intematix phosphor with CRI>80.
- SDCM ≤ 5 each BIN.
- Double layer rolled copper FPC.
- 3M 300LSE tape attached.
- CE, RoHS and UL certified.

Application

- City lighting, landscape lighting, commercial lighting and house contour lighting, etc.



Part No.	Input Vol.	Dimensions(mm)	LM/LED	Power(W/M)	LED Qty/M	CCT/K	LED Type
SR60LA1	12/24V	5000*8	25	12	60	6500	OSRAM LED
SRC0LA1	12/24V	5000*8	25	15	120	6500	OSRAM LED

2835 STRIP

 120°
  IP68
  3years

 2700k
  3000k
  4000k
  6500k



Features

- Sourced by high output OSRAM 2835 LED with good color conformity.
- 99.99% gold thread, pure copper bracket coated with silver.
- USA Intematix phosphor with CRI>80.
- SDCM ≤ 5 each BIN.
- Double layer rolled copper FPC.
- 3M 300LSE tape attached.
- Sealed by silicon glue, anti-UV and never turn yellow
- CE, RoHS and UL certified.

Application

- City lighting, landscape lighting, commercial lighting and house contour lighting, etc.



Part No.	Input Vol.	Dimensions(mm)	LM/LED	Power(W/M)	LED Qty/M	CCT/K	LED Type
SR60JA1	12/24V	5000*10	25	12	60	6500	OSRAM LED
SRC0JA1	12/24V	5000*10	25	15	120	6500	OSRAM LED

5050 STRIP

 120°
  IP33
  3years

 2700k
  3000k
  4000k
  6500k



Features

- Sourced by high output 5050 LED with good color conformity.
- 99.99% gold thread, pure copper bracket coated with silver.
- USA Intematix phosphor with CRI>80.
- SDCM ≤ 5 each BIN.
- Double layer rolled copper FPC.
- 3M 300LSE tape attached.
- CE, RoHS and UL certified.

Application

- City lighting, landscape lighting, commercial lighting and house contour lighting, etc.



Part No.	Input Vol.	Dimensions(mm)	LM/LED	Power(W/M)	LED Qty/M	CCT/K	LED Type
SH30LA1	12/24V	5000*10	23	6	30	6500	5050
SH60LA1	12/24V	5000*10	23	12	60	6500	5050

5050 STRIP

 120°
  IP68
  3years

 2700k
  3000k
  4000k
  6500k



Features

- Sourced by high output 5050 LED with good color conformity.
- 99.99% gold thread, pure copper bracket coated with silver.
- USA Intematix phosphor with CRI>80.
- SDCM ≤ 5 each BIN.
- Double layer rolled copper FPC.
- 3M 300LSE tape attached.
- Sealed by silicon glue, anti-UV and never turn yellow.
- CE, RoHS and UL certified.

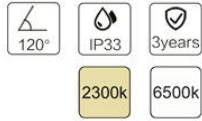
Application

- City lighting, landscape lighting, commercial lighting and house contour lighting, etc.



Part No.	Input Vol.	Dimensions(mm)	LM/LED	Power(W/M)	LED Qty/M	CCT/K	LED Type
SH30JA1	12/24V	5000*12	23	6	30	6500	5050
SH60JA1	12/24V	5000*12	23	12	60	6500	5050

CCT TURNABLE STRIPS



Features

- Sourced by high output 2835 LED with good color conformity.
- 99.99% gold thread, pure copper bracket coated with silver.
- USA Intematix phosphor with CRI>80.
- SDCM ≤ 5 each BIN.
- Double layer rolled copper FPC.
- 3M 300LSE tape attached.
- CE, RoHS and UL certified.

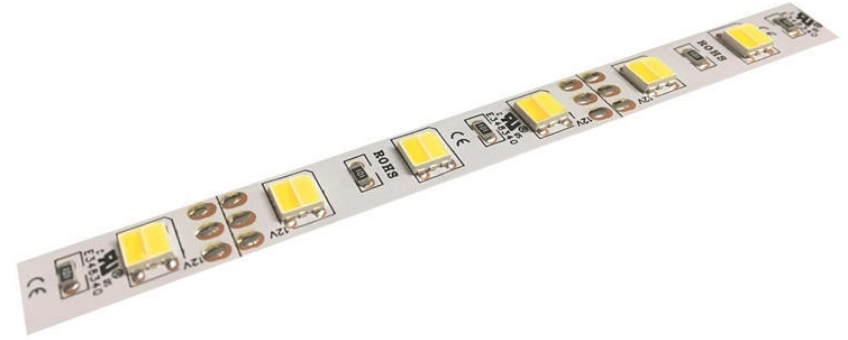
Application

- City lighting, landscape lighting, commercial lighting and house contour lighting, etc.



Part No.	Input Vol.	Dimensions(mm)	LM/LED	Power(W/M)	LED Qty/M	CCT/K	LED Type
SEC0LA1-DW	12V	5000*8	25	18	120	2300/6500	2835

CCT TURNABLE STRIPS



Features

- Sourced by high output 5050 LED with good color conformity.
- 99.99% gold thread, pure copper bracket coated with silver.
- USA Intematix phosphor with CRI>80.
- SDCM ≤ 5 each BIN.
- Double layer rolled copper FPC.
- 3M 300LSE tape attached.
- CE, RoHS and UL certified.

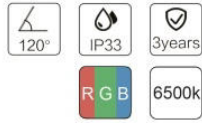
Application

- City lighting, landscape lighting, commercial lighting and house contour lighting, etc.



Part No.	Input Vol.	Dimensions(mm)	LM/LED	Power(W/M)	LED Qty/M	CCT/K	LED Type
SH60LA1-DW	12V	5000*10	15	15	60	2300/6500	5050

RGB+W STRIP



Features

- Sourced by high output 5050RGB+W LED with good color conformity.
- 99.99% gold thread, pure copper bracket coated with silver.
- USA Intematix phosphor with CRI>80.
- SDCM ≤ 5 each BIN.
- Double layer rolled copper FPC.
- 3M 300LSE tape attached.
- CE, RoHS and UL certified.

Application

- City lighting, landscape lighting, commercial lighting and house contour lighting, etc.



Part No.	Input Vol.	Dimensions(mm)	LM/LED	Power(W/M)	LED Qty/M	CCT/K	LED Type
SH60LA1-RGB+W	12/24V	5000*10	15	14.4	60	RGB+W	5050

RGBW STRIP



Features

- Sourced by high output 5050 RGBW LED with good color conformity.
- 99.99% gold thread, pure copper bracket coated with silver.
- USA Intematix phosphor with CRI>80.
- SDCM ≤ 5 each BIN.
- Double layer rolled copper FPC.
- 3M 300LSE tape attached.
- CE, RoHS and UL certified.

Application

- City lighting, landscape lighting, commercial lighting and house contour lighting, etc.

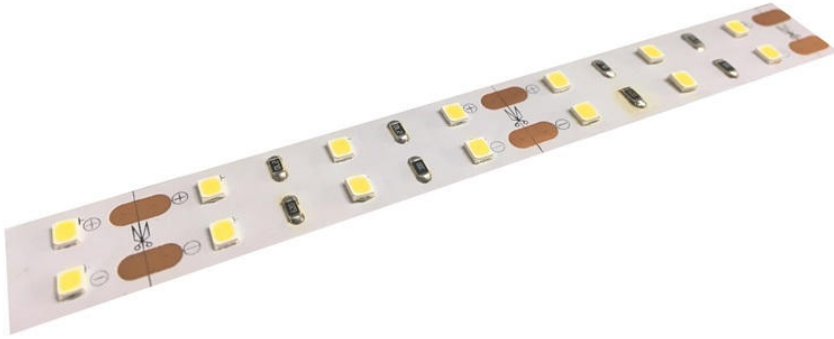


Part No.	Input Vol.	Dimensions(mm)	LM/LED	Power(W/M)	LED Qty/M	CCT/K	LED Type
SH60LA1-RGBW	12/24V	5000*10	15	18	60	RGBW	5050

DOUBLE ROW STRIPS

 120°
  IP33
  3years

 2700k
  3000k
  4000k
  6500k



Features

- Sourced by high output 2835 LED with good color conformity.
- 99.99% gold thread, pure copper bracket coated with silver.
- USA Intematix phosphor with CRI>80.
- SDCM ≤ 5 each BIN.
- Double layer rolled copper FPC.
- 3M 300LSE tape attached.
- CE, RoHS and UL certified.

Application

- City lighting, landscape lighting, commercial lighting and house contour lighting, etc.



Part No.	Input Vol.	Dimensions(mm)	LM/LED	Power(W/M)	LED Qty/M	CCT/K	LED Type
SEC0LAB	24V	1000*15	25	18	120	6500	2835

DOUBLE ROW STRIPS

 120°
  IP33
  3years

 2700k
  3000k
  4000k
  6500k



Features

- Sourced by high output 5050 LED with good color conformity.
- 99.99% gold thread, pure copper bracket coated with silver.
- USA Intematix phosphor with CRI>80.
- SDCM ≤ 5 each BIN.
- Double layer rolled copper FPC.
- 3M 300LSE tape attached.
- CE, RoHS and UL certified.

Application

- City lighting, landscape lighting, commercial lighting and house contour lighting, etc.



Part No.	Input Vol.	Dimensions(mm)	LM/LED	Power(W/M)	LED Qty/M	CCT/K	LED Type
SHC0LAB	24V	1000*24	23	18	120	6500	5050

LED POWER SUPPLY



Features

- Constant Voltage design
- Universal AC input
- Fully encapsulated with IP67 level
- Protections: Short circuit/Over load/Over current
- Cooling by free air convection
- 100% full load burn-in test
- High Reliability

Part No.	Input Vol.	Dimensions(mm)	Input Frequency	Power(W/pcs)	Output Vol.	Efficiency	Working Temperature
LV-12030P	100-240VAC	170*34*24	50-60Hz	30	12V/24V	≥85%	-40°C-70°C
LV-12060P	100-240VAC	162*43*32	50-60Hz	60	12V/24V	≥85%	-40°C-70°C
LV-12100P	100-240VAC	190*62*38	50-60Hz	100	12V/24V	≥85%	-40°C-70°C

LED POWER SUPPLY



Features

- Constant Voltage design
- Universal AC input
- Fully encapsulated with IP67 level
- Protections: Short circuit/Over load/Over current
- Cooling by free air convection
- 100% full load burn-in test
- High Reliability

Part No.	Input Vol.	Dimensions(mm)	Input Frequency	Power(W/pcs)	Output Vol.	Efficiency	Working Temperature
LV-12030	100-240VAC	220*29*20	50-60Hz	30	12V/24V	≥85%	-40°C-70°C
LV-12060	100-240VAC	150*53*35	50-60Hz	60	12V/24V	≥85%	-40°C-70°C
LV-12100	100-240VAC	180*68*40	50-60Hz	100	12V/24V	≥85%	-40°C-70°C
LV-12150	100-240VAC	246*68*52	50-60Hz	150	12V/24V	≥85%	-40°C-70°C
LV-12200	100-240VAC	272*68*55	50-60Hz	200	12V/24V	≥85%	-40°C-70°C
LV-12250	100-240VAC	280*80*48	50-60Hz	250	12V/24V	≥85%	-40°C-70°C